

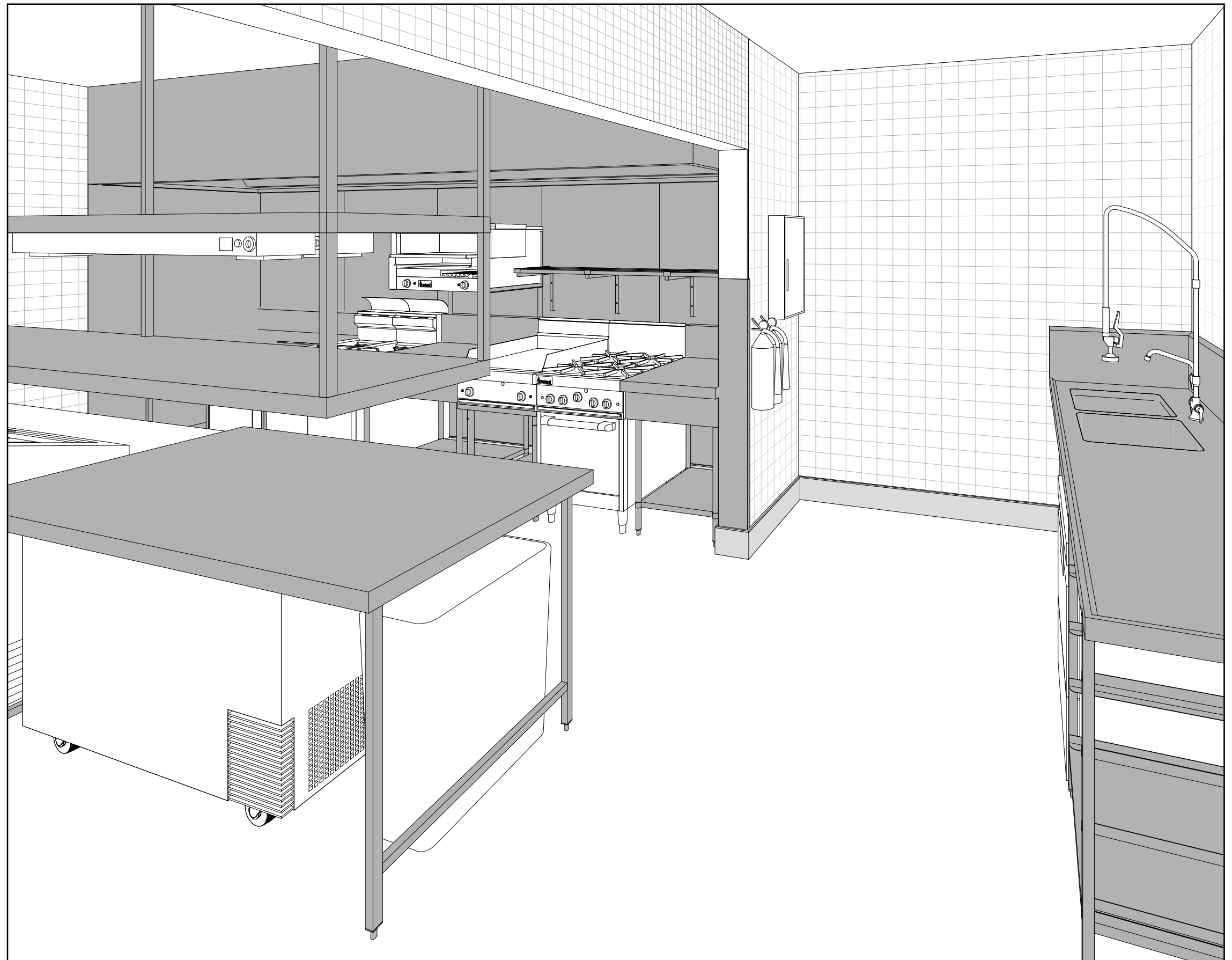


GREENMOUNT BEACH

SURF CLUB

Sheet List

Sheet Number	Sheet Name
A100	Cover
A101	Existing Floor Plan
A102	Demolition Plan
A103	Partiton plan
A104	Proposed Floor Plan
A105	Equipment Legend
A106	Electrical Service Layout
A107	Lighting Plan
A108	Hydraulic Service Layout
A109	Penetration Service Layout
A110	Noggins Setout Plan
A111	S/S Works Layout
A112	S/S Works Details
A113	Exhaust Hood Detail (K02)
A114	Finishes Schedules
A115	Finishes Layout
A116	Section Cut Plan
A117	Elevation 1,2
A118	Elevation 3,4
A119	Elevation 5,6
A120	Elevation 7
A121	Elevation 8,9



Gold Coast (Head Office)
 88 Upton Street
 Bundall QLD 4217
 Brisbane
 1/1 Carol Avenue
 Springwood QLD 4127
 Molendinar
 (Warehouse/Accounts)
 2/8 Reichart Drive
 Molendinar QLD 4214
 Phone: 1300 CKC 000

www.commercialkitchencompany.com.au

Project: Greenmount Surf Club, Café

Address: Marine Parade, Coolangatta QLD 4225



DISCLAIMER:

- All drawings are to be read in conjunction with associated engineers drawings where applicable. All equipment, applications and furniture items shown are close to accurate representations and exact dimensions and clearance requirements should be checked with supplier prior to installation.
- All dimensions are to be checked on site prior to any on site construction or off site fabrication. Use written dimensions only, do not scale from printed or electronic drawings. Electronic formatted drawings should be checked for accuracy against the equivalent hard copy issued by CommercialKitchen Company.
- No responsibility is accepted by CommercialKitchen Company for the misuse or alteration of this drawing in any format.
- The designs and concepts expressed on this page are owned by CommercialKitchen Company and will be assigned to the client on completion for the sole purpose of the intended project use only. Any other use or reproduction must be approved by CommercialKitchen Company.

Cover

Sheet No: A100

Date: 03-Aug-23 11:15:00 AM

REVISION

AMENDMENT

DATE

Rev. A

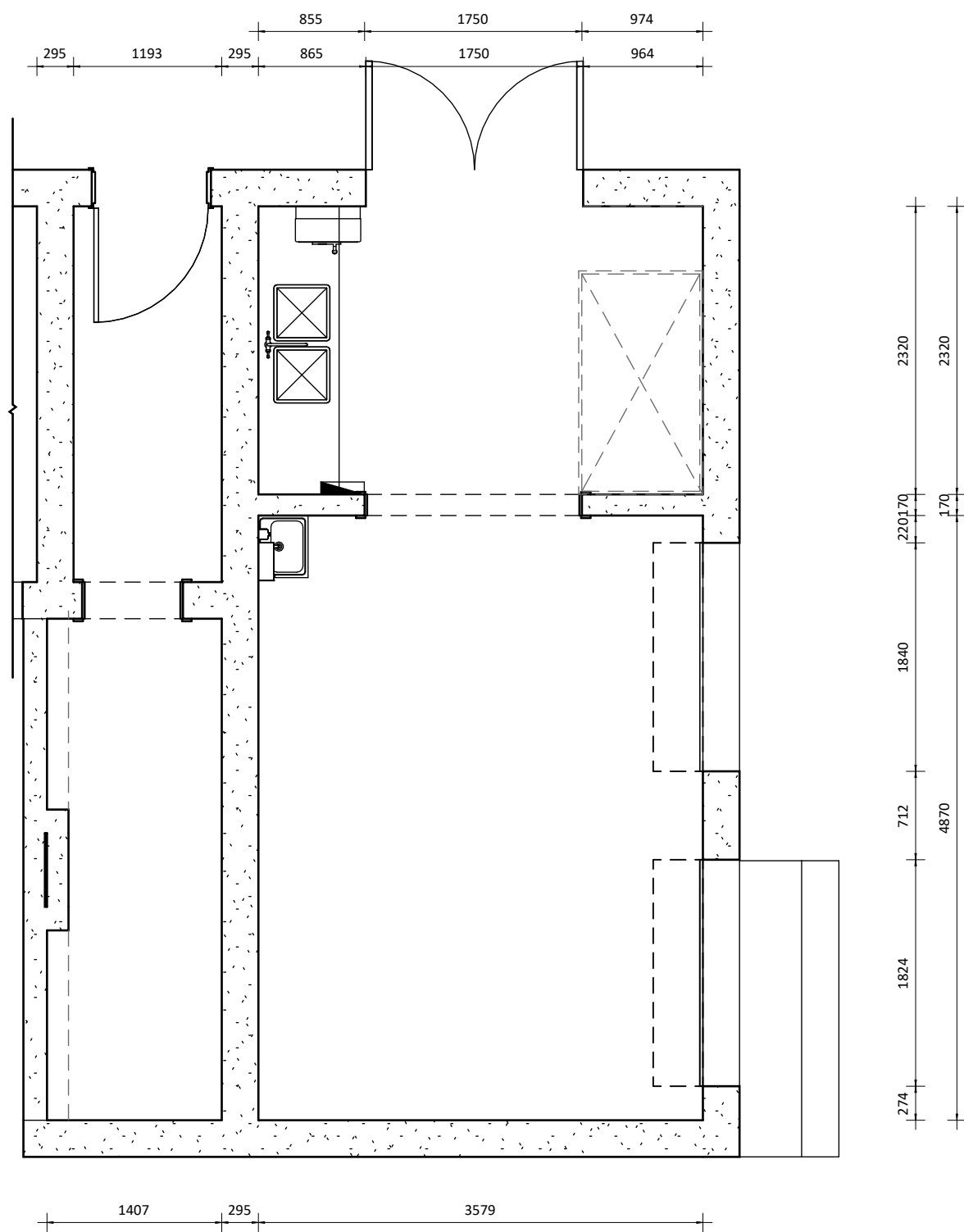
26-07-23

Rev. B

03-08-23

Scale:

@ A3



1 Existing Floor Plan
1 : 50



Gold Coast (Head Office)
88 Upton Street
Bundall QLD 4217
Brisbane
1/1 Carol Avenue
Springwood QLD 4127
Molendinar
(Warehouse/Accounts)
2/8 Reichert Drive
Molendinar QLD 4214
Phone: 1300 CKC 000
www.commercialkitchencompany.com.au

Project: Greenmount Surf Club, Café
Address: Marine Parade, Coolangatta QLD 4225

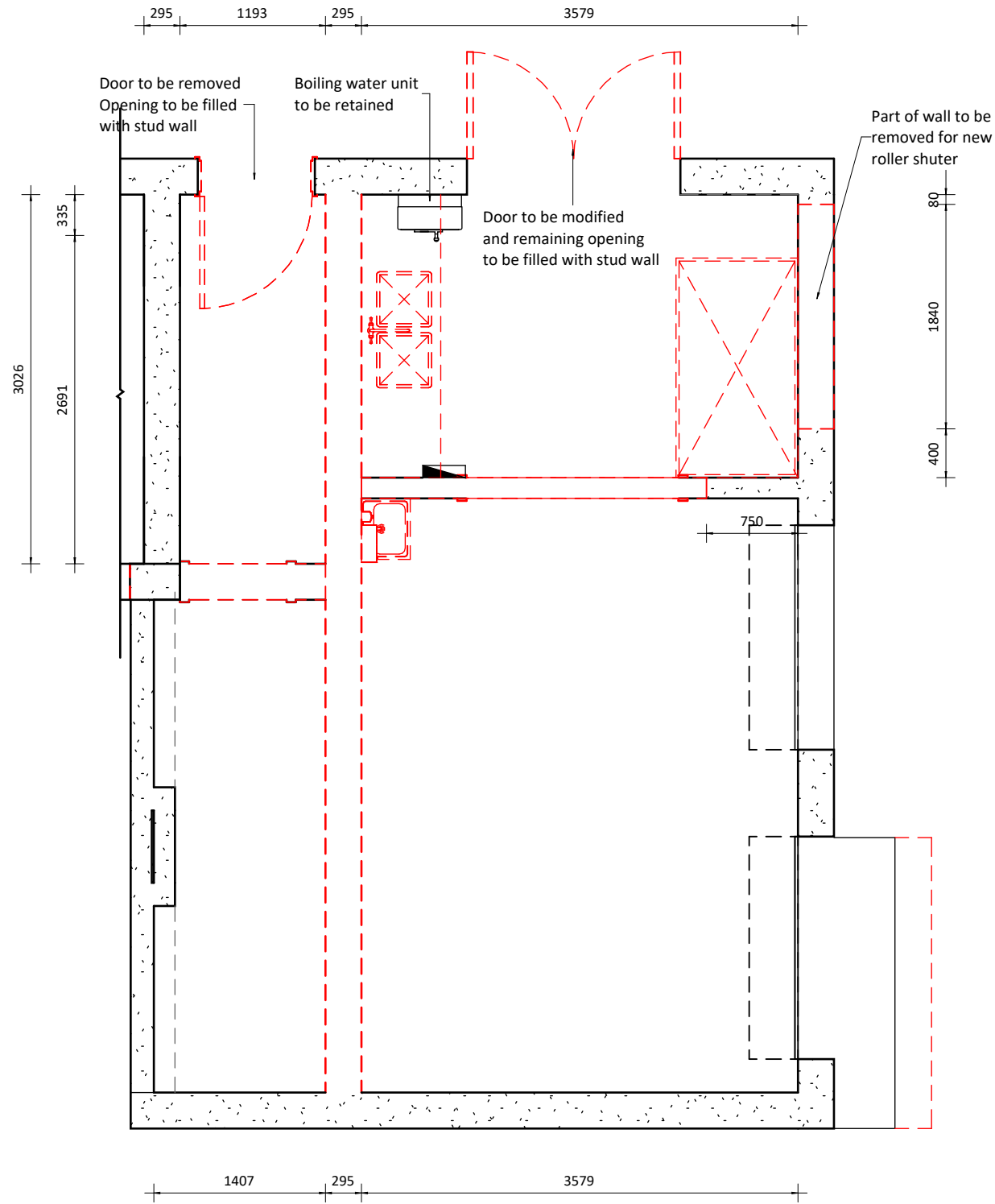


DISCLAIMER:

- All drawings are to be read in conjunction with associated engineers drawings where applicable. All equipment, applications and furniture items shown are close to accurate representations and exact dimensions and clearance requirements should be checked with supplier prior to installation.
- All dimensions are to be checked on site prior to any on site construction or off site fabrication. Use written dimensions only, do not scale from printed or electronic drawings. Electronic formatted drawings should be checked for accuracy against the equivalent hard copy issued by Commercial Kitchen Company.
- No responsibility is accepted by Commercial Kitchen Company for the misuse or alteration of this drawing in any format.
- The designs and concepts expressed on this page are owned by Commercial Kitchen Company and will be assigned to the client on completion for the sole purpose of the intended project use only. Any other use or reproduction must be approved by Commercial Kitchen Company.

Existing Floor Plan		Sheet No: A101	
Date: 03-Aug-23 11:15:00 AM	REVISION	AMENDMENT	DATE
	Rev. A		26-07-23
	Rev. B		03-08-23
Scale: 1 : 50 @ A3			

Partition Legend:	
	Remove / Demo.



1 Demolishing Plan
1 : 50



Gold Coast (Head Office)
88 Upton Street
Bundall QLD 4217
Brisbane
1/1 Carol Avenue
Springwood QLD 4127
Molendinar
(Warehouse/Accounts)
2/8 Reichert Drive
Molendinar QLD 4214
Phone: 1300 CKC 000
www.commercialkitchencompany.com.au

Project: Greenmount Surf Club, Café

Address: Marine Parade, Coolangatta QLD 4225







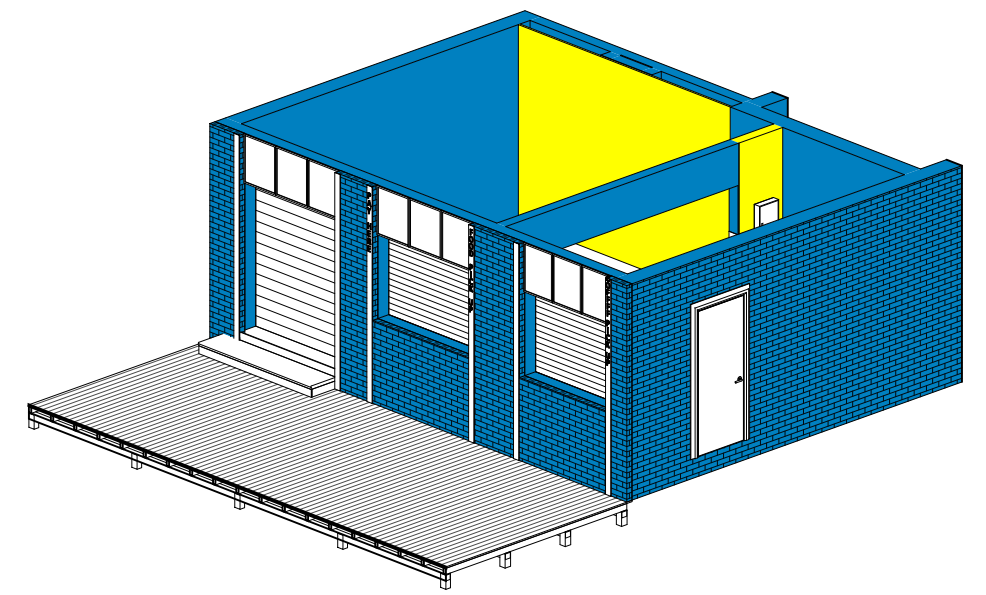
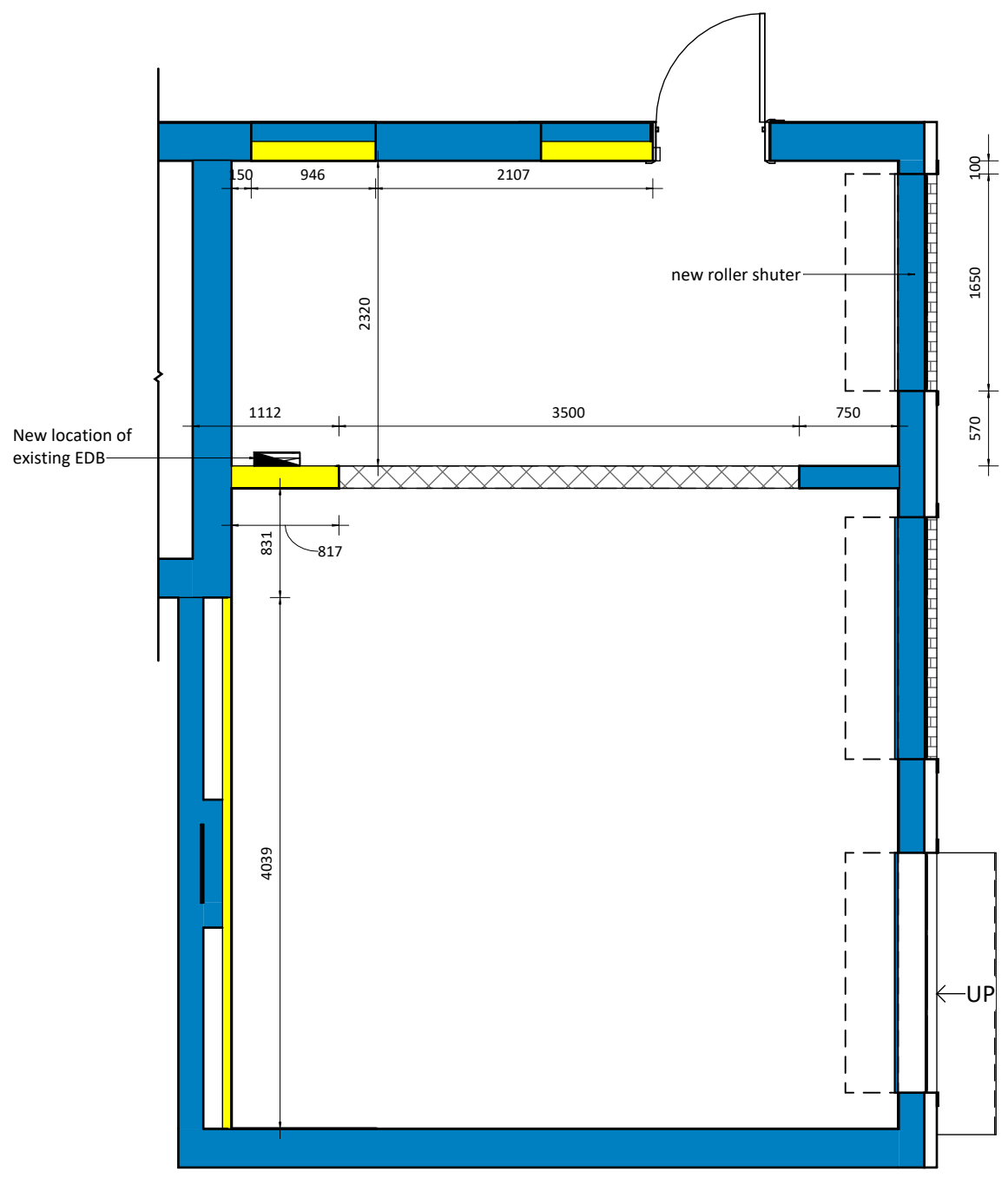
DISCLAIMER:

- All drawings are to be read in conjunction with associated engineers drawings where applicable. All equipment, applications and furniture items shown are close to accurate representations and exact dimensions and clearance requirements should be checked with supplier prior to installation.
- All dimensions are to be checked on site prior to any on site construction or off site fabrication. Use written dimensions only, do not scale from printed or electronic drawings. Electronic formatted drawings should be checked for accuracy against the equivalent hard copy issued by CommercialKitchen Company.
- No responsibility is accepted by CommercialKitchen Company for the misuse or alteration of this drawing in any format.
- The designs and concepts expressed on this page are owned by CommercialKitchen Company and will be assigned to the client on completion for the sole purpose of the intended project use only. Any other use or reproduction must be approved by CommercialKitchen Company.

Demolition Plan		Sheet No:	A102
Date: 03-Aug-23 11:15:01 AM	REVISION	AMENDMENT	DATE
	Rev. A		26-07-23
	Rev. B		03-08-23
Scale: 1 : 50	@ A3		

Partition Legend:

	Existing walls/columns, prep for new finishes
	Full height stud walls clad with plywood ready for finishes to be applied.
	Insulated Coolroom/Freezer room panels
	Bulk head @ 2200AFFL



Gold Coast (Head Office)
 88 Upton Street
 Bundall QLD 4217
 Brisbane
 1/1 Carol Avenue
 Springwood QLD 4127
 Molendinar
 (Warehouse/Accounts)
 2/8 Reichert Drive
 Molendinar QLD 4214
 Phone: 1300 CKC 000
 www.commercialkitchencompany.com.au

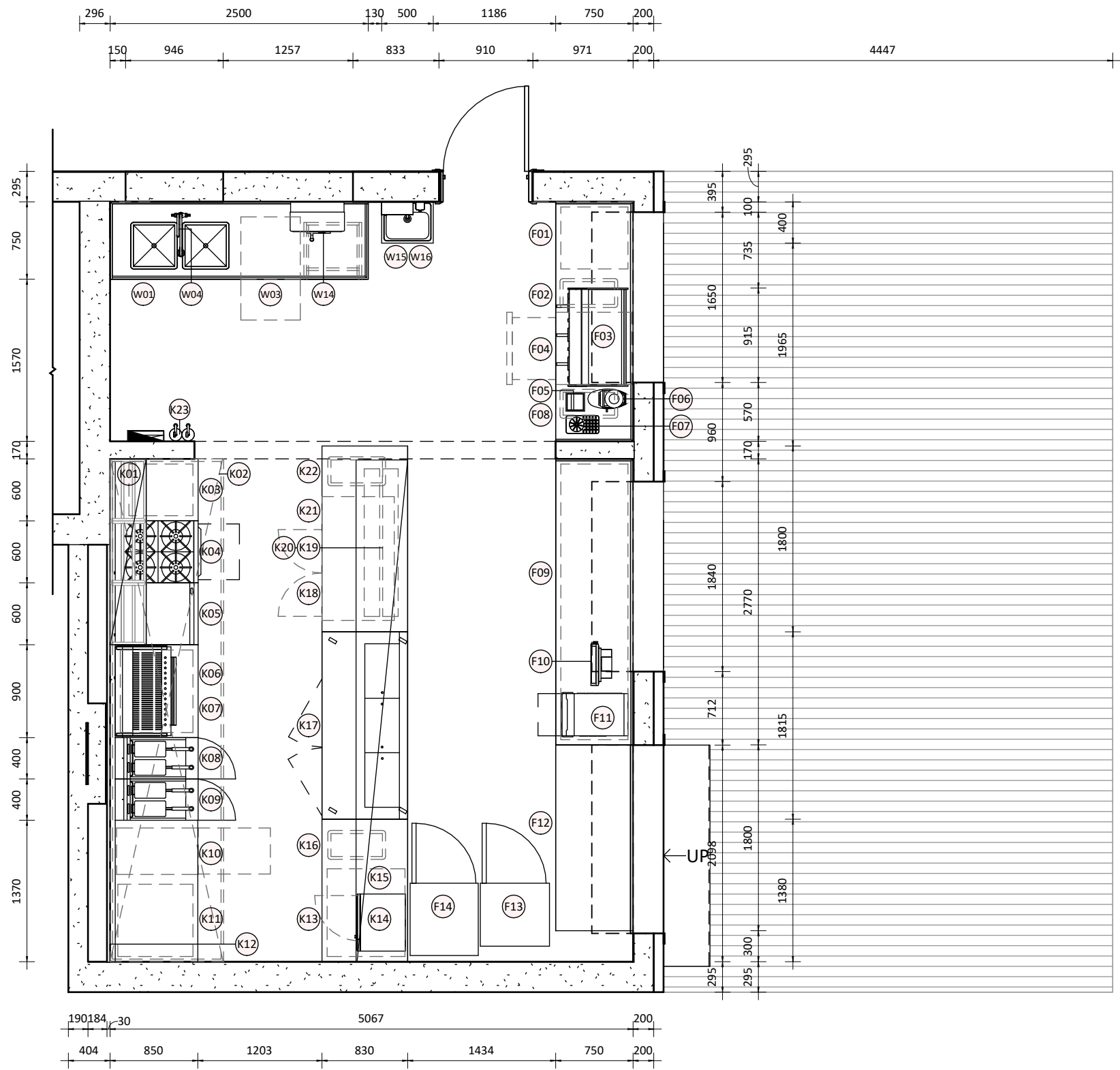
Project: Greenmount Surf Club, Café
 Address: Marine Parade, Coolangatta QLD 4225



DISCLAIMER:

- All drawings are to be read in conjunction with associated engineers drawings where applicable. All equipment, applications and furniture items shown are close to accurate representations and exact dimensions and clearance requirements should be checked with supplier prior to installation.
- All dimensions are to be checked on site prior to any on site construction or off site fabrication. Use written dimensions only, do not scale from printed or electronic drawings. Electronic formatted drawings should be checked for accuracy against the equivalent hard copy issued by Commercial Kitchen Company.
- No responsibility is accepted by Commercial Kitchen Company for the misuse or alteration of this drawing in any format.
- The designs and concepts expressed on this page are owned by Commercial Kitchen Company and will be assigned to the client on completion for the sole purpose of the intended project use only. Any other use or reproduction must be approved by Commercial Kitchen Company.

Partiton plan		Sheet No:	A103	
Date: 03-Aug-23 11:15:01 AM	REVISION	AMENDMENT	DATE	
	Rev. A		26-07-23	
	Rev. B		03-08-23	
Scale:	1 : 50	@ A3		



1 Proposed Floor Plan
 1 : 50



Gold Coast (Head Office)
 88 Upton Street
 Bundall QLD 4217
 Brisbane
 1/1 Carol Avenue
 Springwood QLD 4127
 Molendinar
 (Warehouse/Accounts)
 2/8 Reichert Drive
 Molendinar QLD 4214
 Phone: 1300 CKC 000
 www.commercialkitchencompany.com.au

Project: Greenmount Surf Club, Café
 Address: Marine Parade, Coolangatta QLD 4225

DISCLAIMER:

- All drawings are to be read in conjunction with associated engineers drawings where applicable. All equipment, applications and furniture items shown are close to accurate representations and exact dimensions and clearance requirements should be checked with supplier prior to installation.
- All dimensions are to be checked on site prior to any on site construction or off site fabrication. Use written dimensions only, do not scale from printed or electronic drawings. Electronic formatted drawings should be checked for accuracy against the equivalent hard copy issued by Commercial Kitchen Company.
- No responsibility is accepted by Commercial Kitchen Company for the misuse or alteration of this drawing in any format.
- The designs and concepts expressed on this page are owned by Commercial Kitchen Company and will be assigned to the client on completion for the sole purpose of the intended project use only. Any other use or reproduction must be approved by Commercial Kitchen Company.

Proposed Floor Plan		Sheet No:	A104
Date: 03-Aug-23 11:15:02 AM	REVISION	AMENDMENT	DATE
	Rev. A		26-07-23
	Rev. B		03-08-23
Scale: 1 : 50	@ A3		

FRONT COUNTER EQUIPMENT LEGEND

- F01- Custom s/s work bench 2320W x 750D x 900H including:
a- LHS s/s 2-tier shelving (600W)
b- Cut-out for knock box - jug rinser
c- 150H Splashback
- F02- "Rubbermaid" Slim bin 87 Litre
Model: 3540-60 (Or equivalent)
- F03- 3 group coffee machine
- F04- "FPG" Drawer Refrigerated - Free Standing
Model: IL-C-DRW-A006 (Or equivalent)
- F05- Built in knock box
- F06- Coffee grinder
- F07- "Thiamo" In- bench Jug rinser - 320mm
- F08- "Rubbermaid" Slim bin 87 Litre
Model: 3540-60 (Or equivalent)
- F09- Custom s/s work bench 2770W x 750D x 900H including:
a- s/s 2-tier shelving
b- 150H Splashback
- F10- POS + Printer
- F11- "Turbo-Chef" Counter top high speed oven
Model: The Eco (Or equivalent)
- F12- Existing - Cake display
- F13- Existing - Streets ice cream fridge
- F14- Existing - Drinks fridge

KITCHEN EQUIPMENT LEGEND

- K01- Custom s/s 1 tier removable pot shelf 1800W x 350D
- K02- Custom s/s exhaust hood with fresh air make up
4870W x 1100D x 700H
- K03- "Trueheat" Infill bench
Model: IFB6
- K04- "Trueheat" 4 burner oven range
Model: RCR6-4 (Or equivalent)
- K05- "Trueheat" Flat grill with stand to suit
Model: RCT6-6G (Or equivalent)
- K06- "Trueheat" bench and salamander stand
Model: IFB9-SAL (Or equivalent)
- K07- "Trueheat" Salamander
Model: S86 (Or equivalent)
- K08- "Trueheat" Deep fryer
Model: RCF4 (Or equivalent)
- K09- "Trueheat" Deep fryer
Model: RCF4 (Or equivalent)
- K10- "Adande" Compact freezer
Model: VCC1-SCW (Or equivalent)
- K11- Custom s/s infill bench 1370W x 850D x 900H including:
a- LHS s/s 2 tier shelving (700W)
b- Splashback height TBA to suit adjacent equipment
- K12- Custom s/s U shaped wall sheet 817/4870/1100 x 1950H
- K13- Custom s/s island bench 1380W x 830D x 900H including:
a- RHS s/s 2 tier shelf 850W
- K14- "Robatherm" Commercial microwave oven medium duty
Model: RM1434 (Or equivalent)
- K15- Custom s/s 2 tier gantry mounted from ceiling 4860W x 500D x 1500H
- K16- "Rubbermaid" Brute bin 75lt with dolly to suit
Model: 2620-2640 (Or equivalent)
- K17- "Williams-Jade" 2 door prep pizza fridge
Model: HJ2PCBASS (Or equivalent)
- K18- "Turbo-Air" U/counter 2 door fridge
Model: KUR12-2(HC) (Or equivalent)
- K19- "Stayhot" Strip heaters - Heat & light
Model: VL-1125 (Or equivalent)
- K20- "Stayhot" Strip heaters - Heat & light
Model: VL-1125 (Or equivalent)
- K21- Custom s/s island bench 1800W x 830D x 900H
- K22- "Rubbermaid" Brute bin 75lt with dolly to suit
Model: 2620-2640 (Or equivalent)
- K23- Fire extinguisher with Fire blanket
-Wet Chemical Fire Extinguisher suitable for commercial kitchen environment
-Dry Chemical Fire Extinguisher

PREPERATION & WASH-UP AREA

EQUIPMENT LEGEND

- W01- Custom s/s wash bench with wet edges 2500W x 750D x 900H including:
a- LHS double wash sink 450x450x300
b- RHS s/s dish rack (563W)
c- RHS s/s gable end
d- 300H splashback + LHS 300H splashback
- W02- Spare
- W03- "Hobart" u/counter dishwasher
Model: Ecomax F504
- W04- "3monkeez" Dual hob mount pre-rinse with pot filler
Model: T-3M53058
- W05- Spare
- W06- Spare
- W07- Spare
- W08- Spare
- W09- Spare
- W10- Spare
- W11- Spare
- W12- Spare
- W13- Spare
- W14- Existing - boiling water unit
- W15- "3Monkeez" Paper towel & soap dispenser
a- Model: WA-PTDS (Or equivalent)
b- Model: WA-SD-V (VERTICAL) (Or equivalent)
- W16- "3monkeez" wall mounted hand basin-Knee Operated
Model: AB-KNEEHB_ALL (Or equivalent)
- W17- Spare
- W18- Spare
- W19- Spare



Gold Coast (Head Office)
88 Upton Street
Bundall QLD 4217

Brisbane
1/1 Carol Avenue
Springwood QLD 4127

Molendinar
(Warehouse/Accounts)
2/8 Reichert Drive
Molendinar QLD 4214

Phone: 1300 CKC 000
www.commercialkitchencompany.com.au

Project: Greenmount Surf Club, Café

Address: Marine Parade, Coolangatta QLD 4225



DISCLAIMER:

- All drawings are to be read in conjunction with associated engineers drawings where applicable. All equipment, applications and furniture items shown are close to accurate representations and exact dimensions and clearance requirements should be checked with supplier prior to installation.
- All dimensions are to be checked on site prior to any on site construction or off site fabrication. Use written dimensions only, do not scale from printed or electronic drawings. Electronic formatted drawings should be checked for accuracy against the equivalent hard copy issued by Commercial Kitchen Company.
- No responsibility is accepted by Commercial Kitchen Company for the misuse or alteration of this drawing in any format.
- The designs and concepts expressed on this page are owned by Commercial Kitchen Company and will be assigned to the client on completion for the sole purpose of the intended project use only. Any other use or reproduction must be approved by Commercial Kitchen Company.

Equipment Legend

Date: 03-Aug-23 11:15:03 AM

Scale: @ A3

REVISION

Rev. A

Rev. B

Sheet No: A105

AMENDMENT

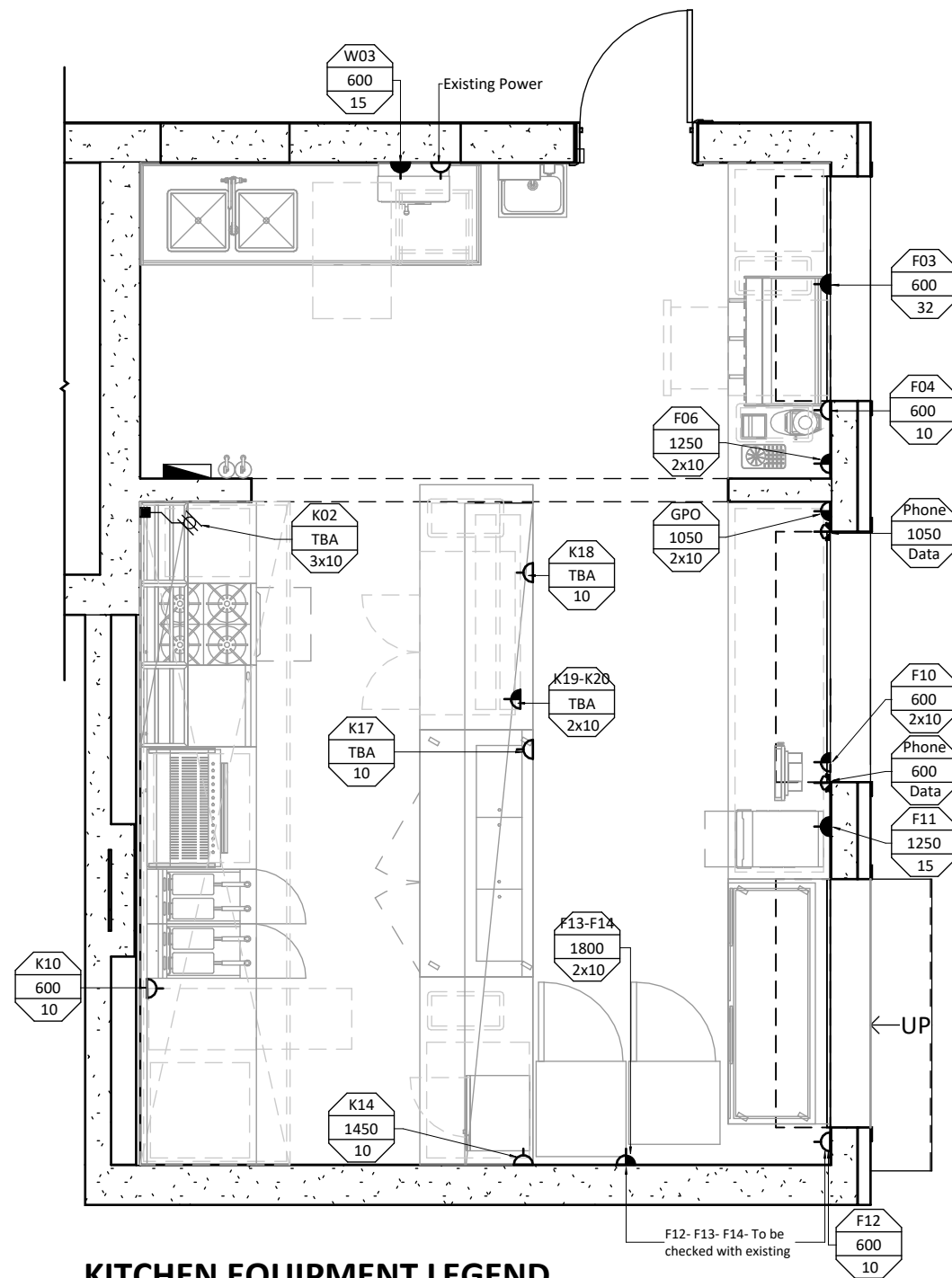
DATE

26-07-23

03-08-23

ELECTRICAL LEGEND

- ITEM NUMBER (001=1_ ABOVE FINISHED FLOOR LEVEL MAX.TOTAL LOAD IN Amp
- 1PHASE DIRECT ELECTRICAL CONNECTION SHOWING ISOLATOR LOCATION
- 3PHASE/ 415V DIRECT ELECTRICAL CONNECTION SHOWING ISOLATOR LOCATION
- SINGLE PHASE GENERAL POWER SUPPLY
 - 10Amp OR LESS (GPO)
 - 15 Amp OR MORE (SPO)
- SINGLE PHASE DOUBLE POWER SUPPLY
- 10AMP GPO FOR CASH REGISTER. PROVIDE DEDICATED CIRCUIT AND CONDUIT FOR DATA CABLING. COMMUNICATIONS PORT TO ACCOMMODATE TELEPHONE & DATA CABLING
- ELECTRICAL SWITCH - ONE WAY
- KITCHEN SUB-BOARD - SIZE & WIRING TO BE DETERMINED BY OTHERS



FRONT COUNTER EQUIPMENT LEGEND

- F03- 3 group coffee machine - 240V/ 50Hz/ 32A
- F04- "FPG" Drawer Refrigerated - Free Standing
Model: IL-C-DRW-A006 (Or equivalent) - 240V/ 50Hz/ 1P/ 1.4A/ 1.3kW
- F06- Coffee grinder - 240V/ 50Hz/ 10A
- F10- POS + Printer - 240V/ 50Hz/ 10A
- F11- "Turbo-Chef" Counter top high speed oven
Model: The Eco (Or equivalent) - 240V / 50Hz / 13A / 2.9kW
- F12- Existing - Cake display **(Electrical connection to be checked on site if required)**
- F13- Existing - Streets ice cream fridge **(Electrical connection to be checked on site if required)**
- F14- Existing - Drinks fridge **(Electrical connection to be checked on site if required)**

KITCHEN EQUIPMENT LEGEND

- K02- Custom s/s exhaust hood with fresh air make up
4870W x 1100D x 700H - 415V/ 50Hz/ 3P/ 10A/ 2500W
- K10- "Adande" Compact freezer
Model: VCC1-SCW (Or equivalent) - 240V/ 50Hz/ 10A/ 0.24kW
- K14- "Robatherm" Commercial microwave oven medium duty
Model: RM1434 (Or equivalent) - 240V/ 50Hz/ 10A/ 1900W
- K17- "Williams-Jade" 2 door prep pizza fridge
Model: HJ2PCBASS (Or equivalent) - 240V/ 50Hz/ 4.8A/ 750W
- K18- "Turbo-Air" U/counter 2 door fridge
Model: KUR12-2(HC) (Or equivalent) - 240V/ 50Hz/ 1.4A/ 280W
- K19- "Stayhot" Strip heaters - Heat & light
Model: VL-1125 (Or equivalent) - 240V/ 50Hz/ 4A/ 800W
- K20- "Stayhot" Strip heaters - Heat & light
Model: VL-1125 (Or equivalent) - 240V/ 50Hz/ 4A/ 800W

PREPERATION & WASH-UP AREA EQUIPMENT LEGEND

- W03- "Hobart" u/counter dishwasher
Model: Ecomax F504 - 240V/ 50Hz/ 15A/ 2.4kW
- W14- Existing - boiling water unit **(Electrical connection to be checked on site if required)**

Gold Coast (Head Office)
88 Upton Street
Bundall QLD 4217

Brisbane
1/1 Carol Avenue
Springwood QLD 4127

Molendinar
(Warehouse/Accounts)
2/8 Reichert Drive
Molendinar QLD 4214

Phone: 1300 CKC 000
www.commercialkitchencompany.com.au

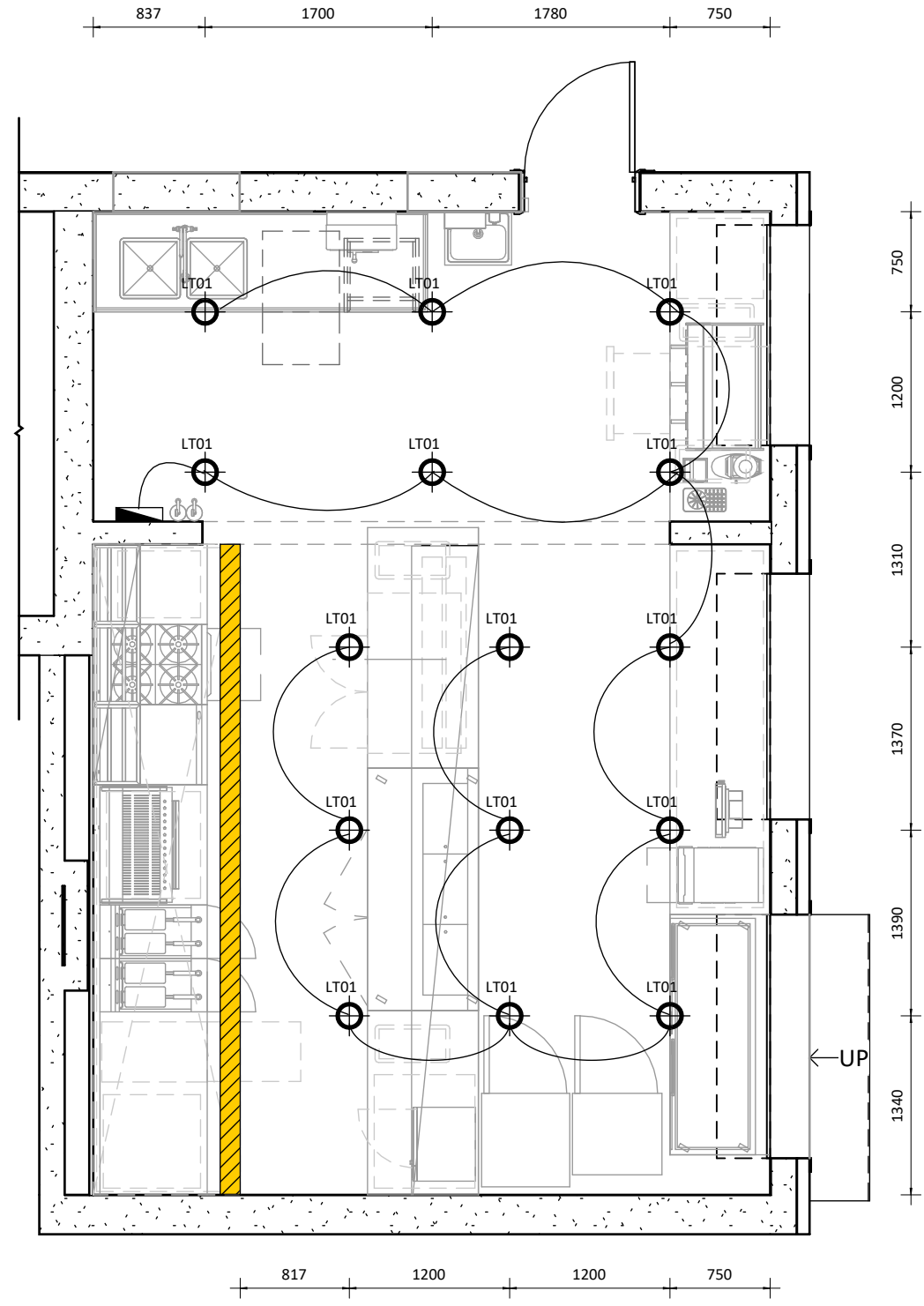
Project: Greenmount Surf Club, Café

Address: Marine Parade, Coolangatta QLD 4225




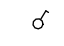

DISCLAIMER:

- All drawings are to be read in conjunction with associated engineers drawings where applicable. All equipment, applications and furniture items shown are close to accurate representations and exact dimensions and clearance requirements should be checked with supplier prior to installation.
- All dimensions are to be checked on site prior to any on site construction or off site fabrication. Use written dimensions only, do not scale from printed or electronic drawings. Electronic formatted drawings should be checked for accuracy against the equivalent hard copy issued by CommercialKitchen Company
- No responsibility is accepted by CommercialKitchen Company for the misuse or alteration of this drawing in any format.
- The designs and concepts expressed on this page are owned by CommercialKitchen Company and will be assigned to the client on completion for the sole purpose of the intended project use only. Any other use or reproduction must be approved by CommercialKitchen Company.

Electrical Service Layout		Sheet No: A106	
Date: 03-Aug-23 11:15:03 AM	REVISION	AMENDMENT	DATE
	Rev. A		26-07-23
	Rev. B		03-08-23
Scale: 1 : 50	@ A3		




Lighting Legend:

-  **LT01:** BOH down light - White (BOH/FOH) 10W x19
-  **LT03:** Sealed fluorescent x1
-  Exhaust Hood Light
-  Dimmable Electrical Switch
-  Electrical Distribution Board (EDB)




Gold Coast (Head Office)
 88 Upton Street
 Bundall QLD 4217
 Brisbane
 1/1 Carol Avenue
 Springwood QLD 4127
 Molendinar
 (Warehouse/Accounts)
 2/8 Reichert Drive
 Molendinar QLD 4214
 Phone: 1300 CKC 000
 www.commercialkitchencompany.com.au

Project: Greenmount Surf Club, Café
 Address: Marine Parade, Coolangatta QLD 4225

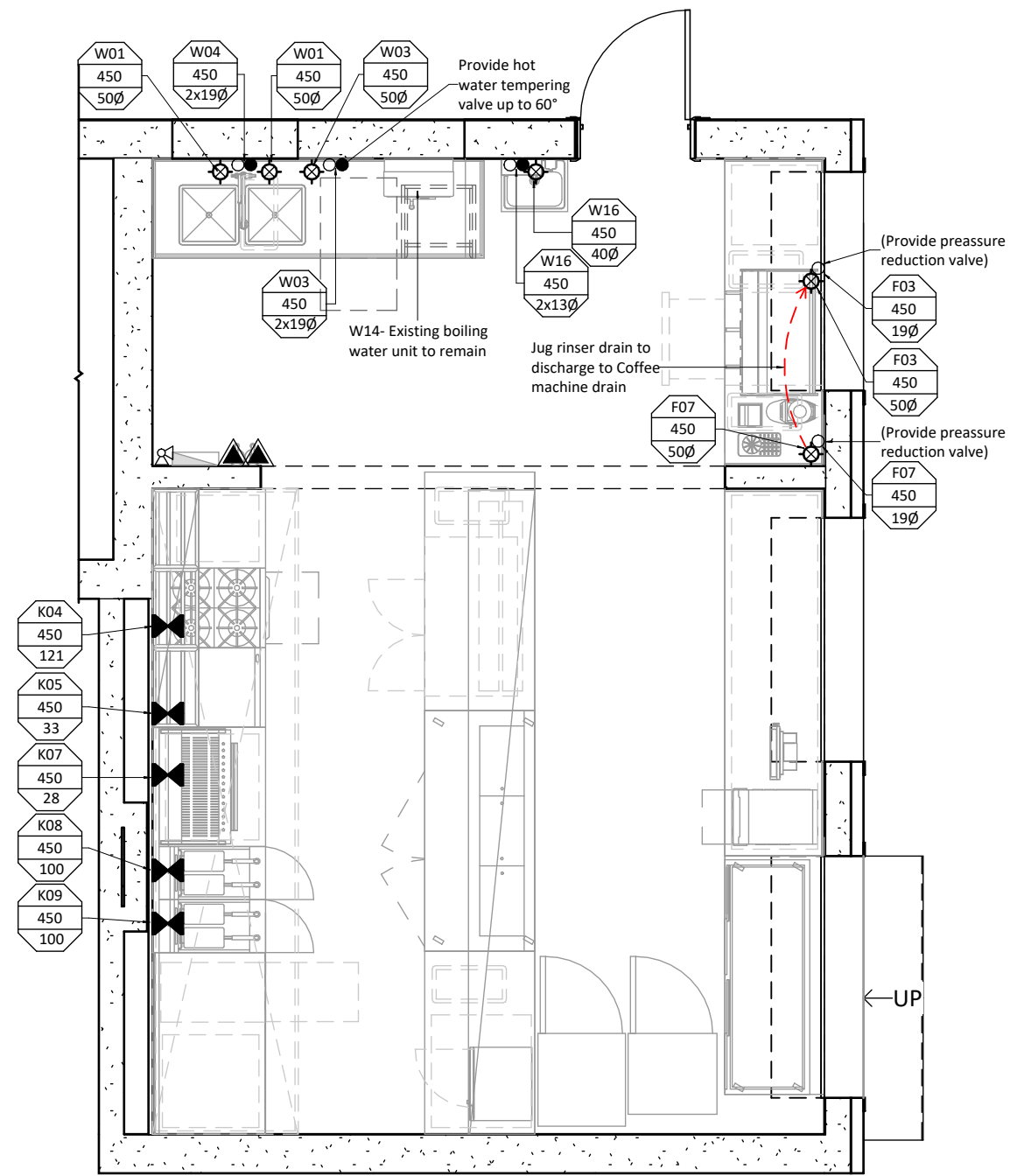


DISCLAIMER:

- All drawings are to be read in conjunction with associated engineers drawings where applicable. All equipment, applications and furniture items shown are close to accurate representations and exact dimensions and clearance requirements should be checked with supplier prior to installation.
- All dimensions are to be checked on site prior to any on site construction or off site fabrication. Use written dimensions only, do not scale from printed or electronic drawings. Electronic formatted drawings should be checked for accuracy against the equivalent hard copy issued by CommercialKitchen Company
- No responsibility is accepted by CommercialKitchen Company for the misuse or alteration of this drawing in any format.
- The designs and concepts expressed on this page are owned by CommercialKitchen Company and will be assigned to the client on completion for the sole purpose of the intended project use only. Any other use or reproduction must be approved by CommercialKitchen Company.

Lighting Plan		Sheet No:	A107	
Date: 03-Aug-23 11:15:04 AM	REVISION	AMENDMENT	DATE	
	Rev. A		26-07-23	
	Rev. B		03-08-23	
Scale: As indicated	@ A3			

GAS TYPE: NATURAL



HYDRAULIC LEGEND

- WATER**
- 001 ITEM NUMBER
 - 450 CENTER ABOVE FINISHED FLOOR LEVEL
 - 2.4 QUANTITY x(O) NOM. BORE PIPE DIAMETER
 - HOT WATER PIPE & STOP VALVE
 - COLD WATER PIPE & STOP VALVE
 - HOT & COLD WATER PIPE WITH TAPSET
 - ◆ EQUIPMENT CONNECTION POINT
 - ⊗ COLD WATER CONNECTION WITH ISOLATING VALVE, ADJ. PRESS
- WASTE**
- ⊗ DIRECT WASTE CONNECTION
 - TUNDISH DRAIN CONNECTION
 - FLOOR WASTE 150mm
 - FLOOR TROUGH WASTE
- GAS**
- 001 ITEM NUMBER
 - 450 ABOVE FINISHED FLOOR LEVEL
 - 2.4 Mj / pH NATURAL GAS
 - ⊗ EQUIPMENT CONNECTION SUPPLY WITH GAS ISOLATION VALVE
 - ▲ FIRE EXTINGUISHER
 - ⊗ EMERGENCY GAS SHUT OFF VALVE
 - RL REFERENCE LINE

PREPERATION & WASH-UP AREA EQUIPMENT LEGEND

- W01- Custom s/s wash bench with wet edges 2500W x 750D x 900H including:
 - a- LHS double wash sink 450x450x300
 - b- RHS s/s dish rack (563W)
 - c- RHS s/s gable end
 - d- 300H splashback + LHS 300H splashback
- W03- "Hobart" u/counter dishwasher
Model: Ecomax F504
- W04- "3monkeez" Dual hob mount pre -rinse with pot filler
Model: T-3M53058
- W14- Existing - boiling water unit
- W15- "3Monkeez" Paper towel & soap dispenser
 - a- Model: WA-PTDS (Or equivalent)
 - b- Model: WA-SD-V (VERTICAL) (Or equivalent)
- W16- "3monkeez" wall mounted hand basin -Knee Operated
Model: AB-KNEEHB_ALL (Or equivalent)

KITCHEN EQUIPMENT LEGEND

- K04- "Trueheat" 4 burner oven range
Model: RCR6-4 (Or equivalent)
- K05- "Trueheat" Flat grill with stand to suit
Model: RCT6-6G (Or equivalent)
- K07- "Trueheat" Salamander
Model: S86 (Or equivalent)
- K08- "Truheat" Deep fryer
Model: RCF4 (Or equivalent)
- K09- "Truheat" Deep fryer
Model: RCF4 (Or equivalent)
- K23- Fire extinguisher with Fire blanket
-Wet Chemical Fire Extinguisher suitable for commercial kitchen environment
- Dry Chemical Fire Extinguisher

FRONT COUNTER EQUIPMENT LEGEND

- F03- 3 group coffee machine
- F07- "Thiamo" In- bench Jug rinser - 320mm

Gold Coast (Head Office)
88 Upton Street
Bundall QLD 4217

Brisbane
1/1 Carol Avenue
Springwood QLD 4127

Molendinar
(Warehouse/Accounts)
2/8 Reichert Drive
Molendinar QLD 4214

Phone: 1300 CKC 000
www.commercialkitchencompany.com.au

Project: Greenmount Surf Club, Café

Address: Marine Parade, Coolangatta QLD 4225

DISCLAIMER:

- All drawings are to be read in conjunction with associated engineers drawings where applicable. All equipment, applications and furniture items shown are close to accurate representations and exact dimensions and clearance requirements should be checked with supplier prior to installation.
- All dimensions are to be checked on site prior to any on site construction or off site fabrication. Use written dimensions only, do not scale from printed or electronic drawings. Electronic formatted drawings should be checked for accuracy against the equivalent hard copy issued by CommercialKitchen Company
- No responsibility is accepted by CommercialKitchen Company for the misuse or alteration of this drawing in any format.
- The designs and concepts expressed on this page are owned by CommercialKitchen Company and will be assigned to the client on completion for the sole purpose of the intended project use only. Any other use or reproduction must be approved by CommercialKitchen Company.

Hydraulic Service Layout		Sheet No:	A108	
Date: 03-Aug-23 11:15:05 AM	REVISION	AMENDMENT	DATE	
	Rev. A		26-07-23	
	Rev. B		03-08-23	
Scale:	1 : 50	@ A3		

GAS TYPE: NATURAL

HYDRAULIC LEGEND

WATER

001	ITEM NUMBER
450	CENTER ABOVE FINISHED FLOOR LEVEL
2.4	QUANTITY x(O) NOM. BORE PIPE DIAMETER

- HOT WATER PIPE & STOP VALVE
- COLD WATER PIPE & STOP VALVE
- HOT & COLD WATER PIPE WITH TAPSET

◆ EQUIPMENT CONNECTION POINT

⊗ COLD WATER CONNECTION WITH ISOLATING VALVE, ADJ. PRESS

WASTE

⊗ DIRECT WASTE CONNECTION

● TUNDISH DRAIN CONNECTION

⊗ FLOOR WASTE 150mm

⊗ FLOOR TROUGH WASTE

GAS

001	ITEM NUMBER
450	ABOVE FINISHED FLOOR LEVEL
2.4	Mj / pH NATURAL GAS

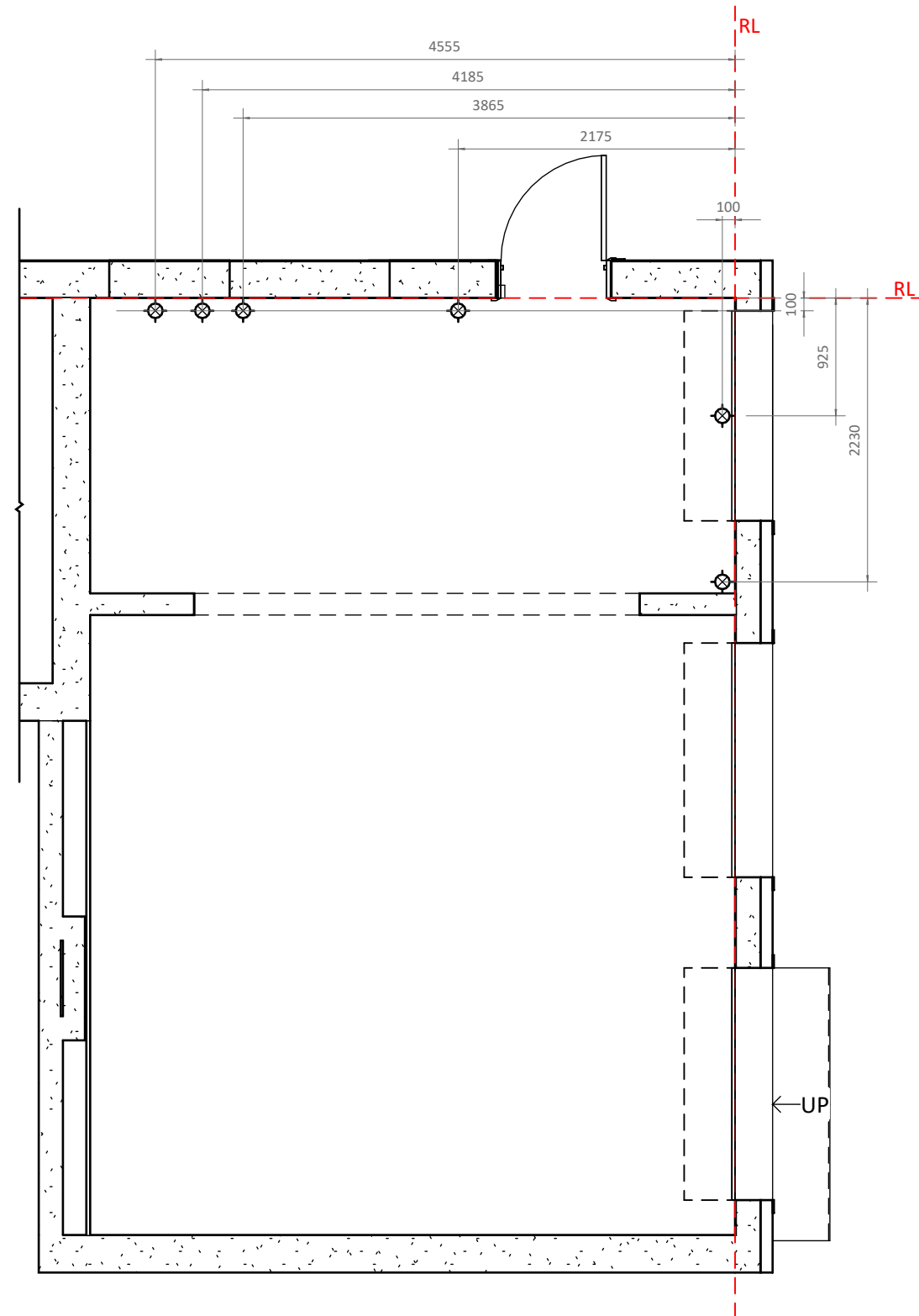
⊗ EQUIPMENT CONNECTION SUPPLY WITH GAS ISOLATION VALVE

FIRE

▲ FIRE EXTINGUISHER

⊗ EMERGENCY GAS SHUT OFF VALVE

RL REFERENCE LINE



Gold Coast (Head Office)
 88 Upton Street
 Bundall QLD 4217
 Brisbane
 1/1 Carol Avenue
 Springwood QLD 4127
 Molendinar
 (Warehouse/Accounts)
 2/8 Reichert Drive
 Molendinar QLD 4214
 Phone: 1300 CKC 000
 www.commercialkitchencompany.com.au

Project: Greenmount Surf Club, Café

Address: Marine Parade, Coolangatta QLD 4225



DISCLAIMER:

- All drawings are to be read in conjunction with associated engineers drawings where applicable. All equipment, applications and furniture items shown are close to accurate representations and exact dimensions and clearance requirements should be checked with supplier prior to installation.
- All dimensions are to be checked on site prior to any on site construction or off site fabrication. Use written dimensions only, do not scale from printed or electronic drawings. Electronic formatted drawings should be checked for accuracy against the equivalent hard copy issued by CommercialKitchen Company
- No responsibility is accepted by CommercialKitchen Company for the misuse or alteration of this drawing in any format.
- The designs and concepts expressed on this page are owned by CommercialKitchen Company and will be assigned to the client on completion for the sole purpose of the intended project use only. Any other use or reproduction must be approved by CommercialKitchen Company.

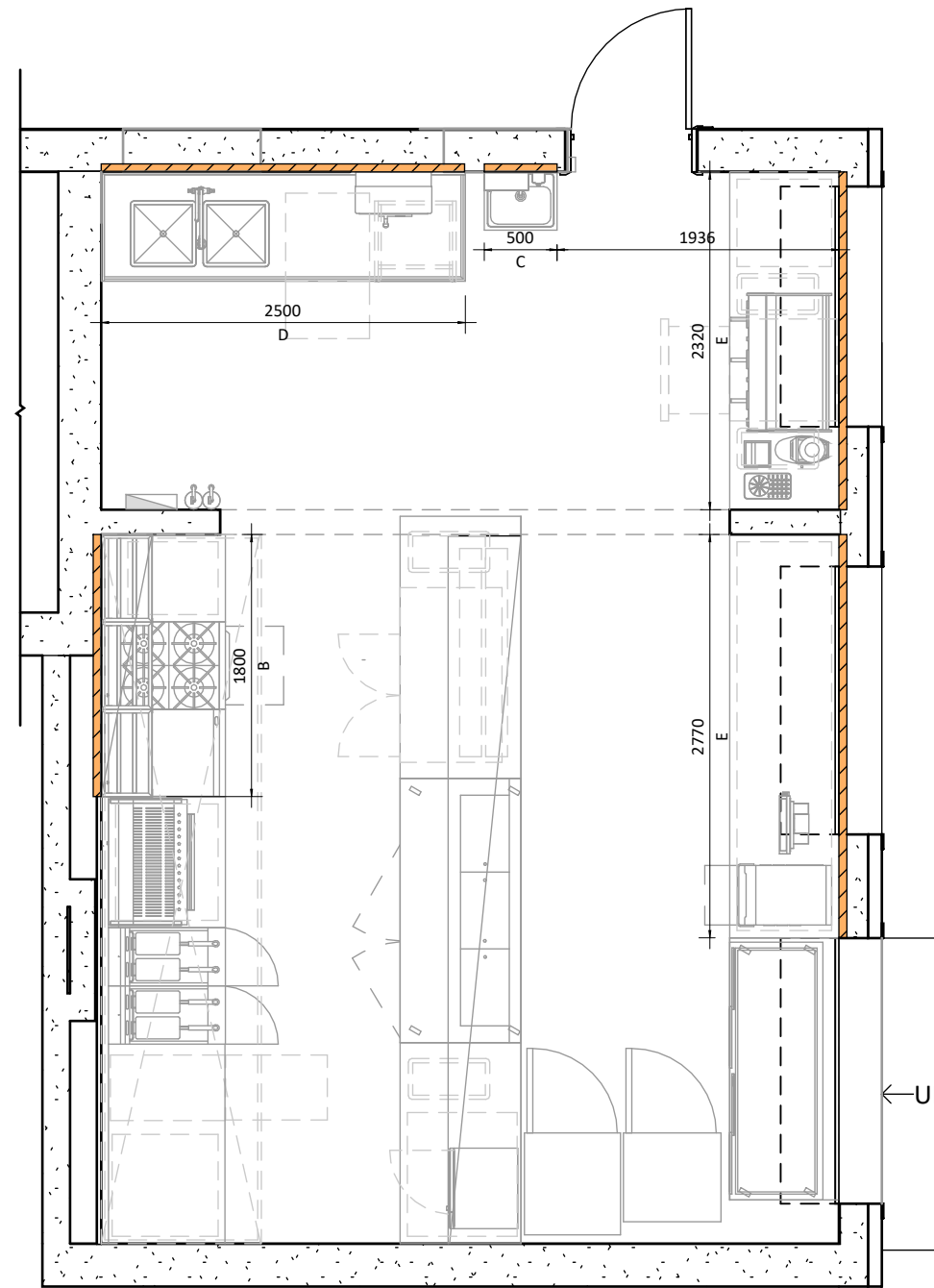
Penetration Service Layout

Sheet No: A109

Date: 03-Aug-23 11:15:05 AM

REVISION	AMENDMENT	DATE
Rev. A		26-07-23
Rev. B		03-08-23

Scale: 1 : 50 @ A3



HEIGHTS OF REQUIRED WALL FIXING		
NOGGINS TYPE	CTR HEIGHT A.F.F.L	APPLICATION
A	1900	2 TIER STAINLESS STEEL WALL /POT SHELVES (c'shape wall bracket)
	1400	
B	1250	1 TIER STAINLESS STEEL REMOVABLE SHELVES (c'shape wall bracket)
	1380	
C	800-850	HAND BASIN
D	835	WET BENCH
E	850	DRY BENCH
F	1385-1931	HWU
G	450	CLEANER'S SINK
NOTE : MIN NOGGIN SIZE 90mm		
PLEASE NOTE: NOGGINS WILL BE REQUIRE FOR WALL FIXING FOR BENCHWORK, SHELVING, ETC. REFER DRAWING NO. HDSBD-01, FAILURE TO PROVIDE ADEQUATE WALL FIXING MAY RESULT IN AN INCREASE IN THE INSTALLATION CHARGE.		



Gold Coast (Head Office)
 88 Upton Street
 Bundall QLD 4217
 Brisbane
 1/1 Carol Avenue
 Springwood QLD 4127
 Molendinar
 (Warehouse/Accounts)
 2/8 Reichert Drive
 Molendinar QLD 4214
 Phone: 1300 CKC 000
 www.commercialkitchencompany.com.au

Project: Greenmount Surf Club, Café

Address: Marine Parade, Coolangatta QLD 4225



DISCLAIMER:

- All drawings are to be read in conjunction with associated engineers drawings where applicable. All equipment, applications and furniture items shown are close to accurate representations and exact dimensions and clearance requirements should be checked with supplier prior to installation.
- All dimensions are to be checked on site prior to any on site construction or off site fabrication. Use written dimensions only, do not scale from printed or electronic drawings. Electronic formatted drawings should be checked for accuracy against the equivalent hard copy issued by Commercial Kitchen Company.
- No responsibility is accepted by Commercial Kitchen Company for the misuse or alteration of this drawing in any format.
- The designs and concepts expressed on this page are owned by Commercial Kitchen Company and will be assigned to the client on completion for the sole purpose of the intended project use only. Any other use or reproduction must be approved by Commercial Kitchen Company.

Noggins Setout Plan

Sheet No: A110

Date: 03-Aug-23 11:15:06 AM

REVISION	AMENDMENT	DATE
Rev. A		26-07-23
Rev. B		03-08-23

Scale: 1 : 50 @ A3

PREPERATION & WASH-UP AREA EQUIPMENT LEGEND

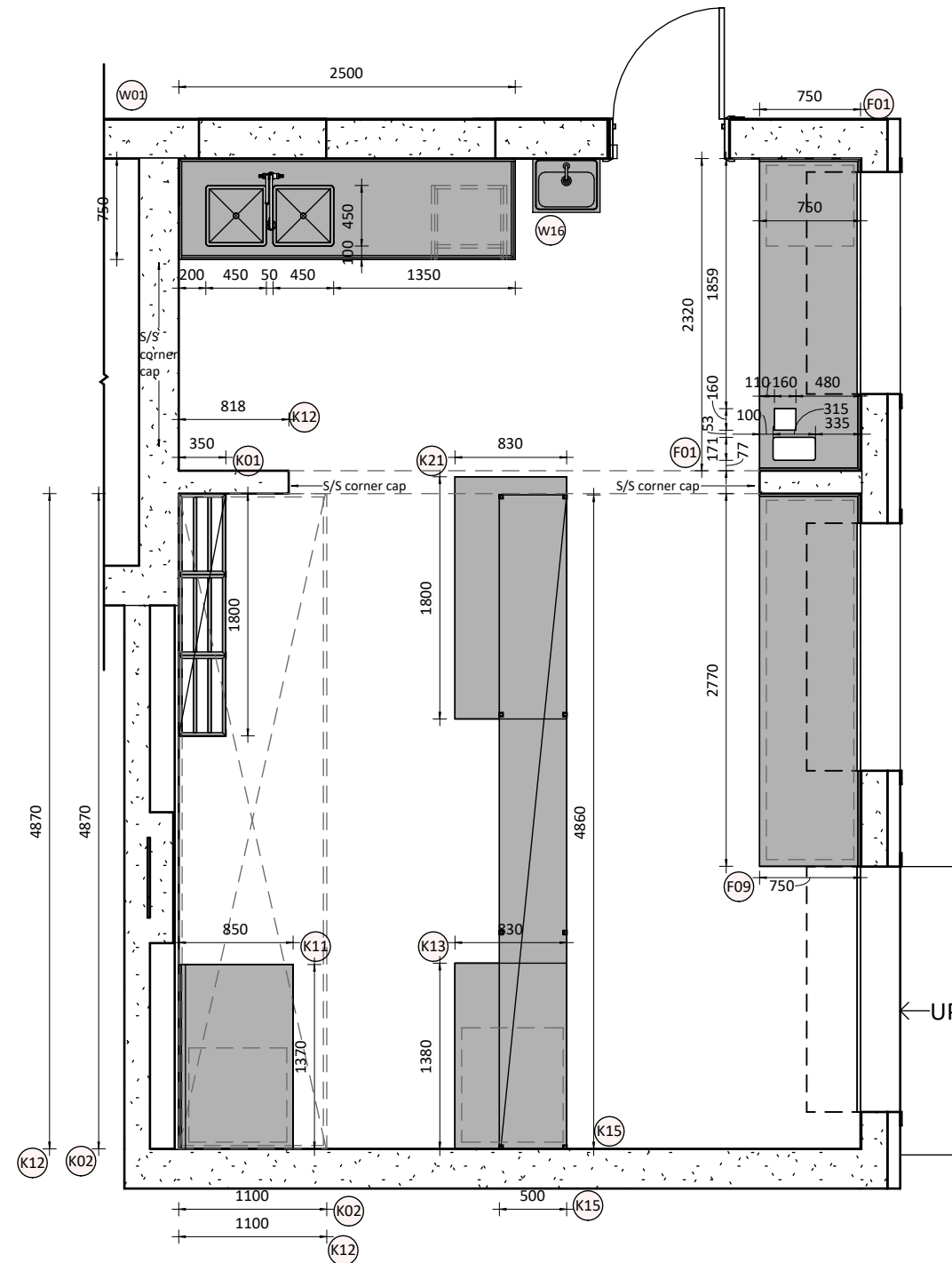
- W01- Custom s/s wash bench with wet edges 2500W x 750D x 900H including:
 a- LHS double wash sink 450x450x300
 b- RHS s/s dish rack (563W)
 c- RHS s/s gable end
 d- 300H splashback + LHS 300H splashback
- W16- "3monkeez" wall mounted hand basin -Knee Operated
 Model: AB-KNEEHB_ALL (Or equivalent)

FRONT COUNTER EQUIPMENT LEGEND

- F01- Custom s/s work bench 2320W x 750D x 900H including:
 a- LHS s/s 2-tier shelving (600W)
 b- Cut-out for knock box - jug rinser
 c- 150H Splashback
- F09 Custom s/s work bench 2770W x 750D x 900H including:
 a- s/s 2-tier shelving
 b- 150H Splashback

KITCHEN EQUIPMENT LEGEND

- K01- Custom s/s 1 tier removable pot shelf 1800W x 350D
 K02- Custom s/s exhaust hood with fresh air make up
 4870W x 1100D x 700H
- K11- Custom s/s infill bench 1370W x 850D x 900H including:
 a- LHS s/s 2 tier shelving (700W)
 b- Splashback height TBA to suit adjacent equipment
- K12- Custom s/s U shaped wall sheet 817/4870/1100 x 1950H
- K13- Custom s/s island bench 1380W x 830D x 900H including:
 a- RHS s/s 2 tier shelf 850W
- K15- Custom s/s 2 tier gantry mounted from ceiling 4860W x 500D x 1500H
- K21- Custom s/s island bench 1800W x 830D x 900H



Gold Coast (Head Office)
 88 Upton Street
 Bundall QLD 4217

Brisbane
 1/1 Carol Avenue
 Springwood QLD 4127

Molendinar
 (Warehouse/Accounts)
 2/8 Reichert Drive
 Molendinar QLD 4214

Phone: 1300 CKC 000
 www.commercialkitchencompany.com.au

Project: Greenmount Surf Club, Café

Address: Marine Parade, Coolangatta QLD 4225



DISCLAIMER:

- All drawings are to be read in conjunction with associated engineers drawings where applicable. All equipment, applications and furniture items shown are close to accurate representations and exact dimensions and clearance requirements should be checked with supplier prior to installation.
- All dimensions are to be checked on site prior to any on site construction or off site fabrication. Use written dimensions only, do not scale from printed or electronic drawings. Electronic formatted drawings should be checked for accuracy against the equivalent hard copy issued by Commercial Kitchen Company.
- No responsibility is accepted by Commercial Kitchen Company for the misuse or alteration of this drawing in any format.
- The designs and concepts expressed on this page are owned by Commercial Kitchen Company and will be assigned to the client on completion for the sole purpose of the intended project use only. Any other use or reproduction must be approved by Commercial Kitchen Company.

S/S Works Layout

Sheet No: A111

Date: 03-Aug-23 11:15:06 AM

REVISION

AMENDMENT

DATE

Rev. A

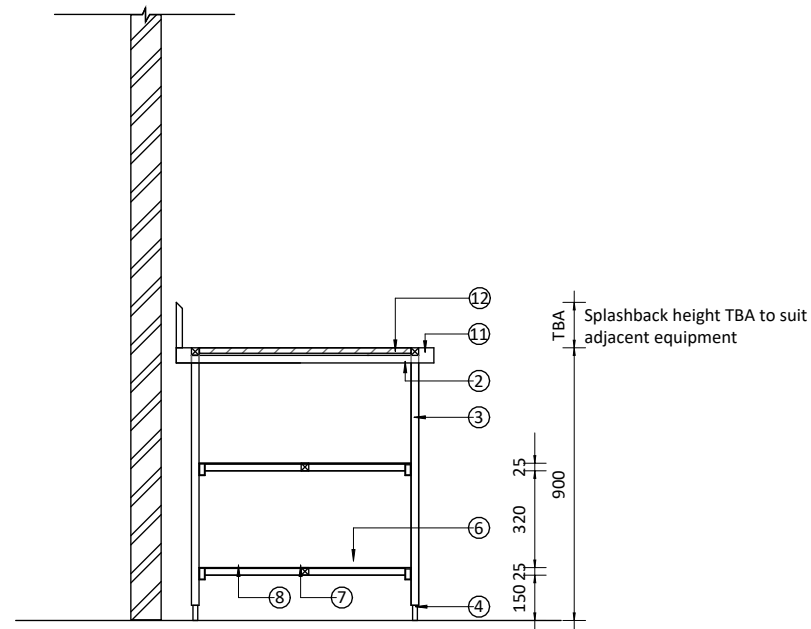
26-07-23

Rev. B

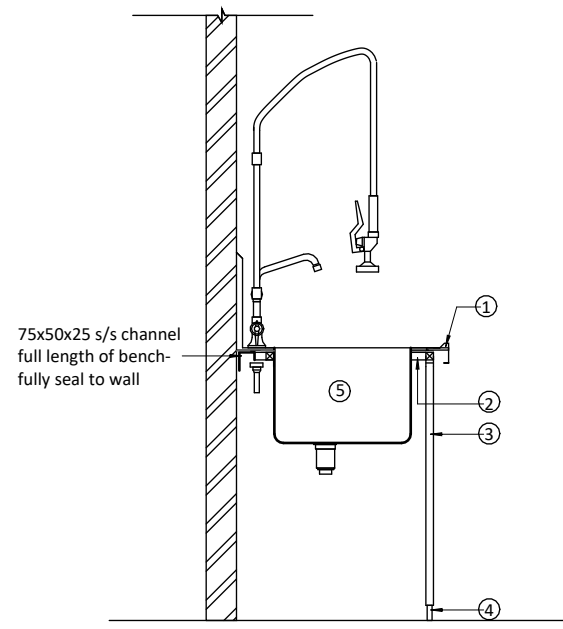
03-08-23

Scale: 1 : 50 @ A3

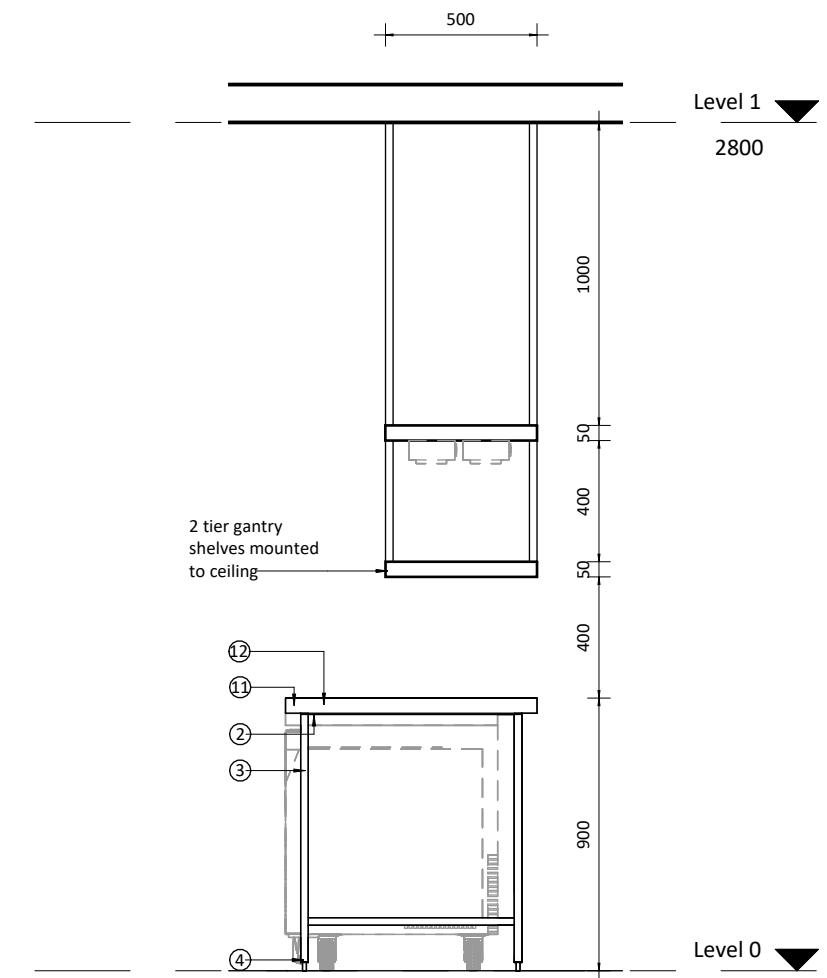
Item	Description	Material	Note
1	Bench top	1.2mm 304 grade° N 4 S.S	S/Steel benchtop adhered to bench frames and crossbracing with 3m brand VHB double sided tape with angel folded type wet edge
2	Frames	25x25x1.2mm 304 grade° N 4 S.H.S	Weld & polished Open ends with nylon caps on
3	Legs	25x25x1.2mm 304 grade° N 4 S.H.S	with adjustable Stainless Steel PIN foot
4	Foot	stainless pin foot	-
5	Sink bowl	1.2mm 304 grade° N 4 S.S	sink bowl welded into setdown bench top radiused of 25mm
6	Under Shelf	1.2mm 304 grade° N 4 S.S	Removable with 40mm fascia
7	Cross-rails	25x25x1.2mm 304 grade° N 4 S.H.S	Weld & polished Open ends with nylon caps on
8	Fallshaw swivel plate	MSA125G/MZPTB	Fix to underside of shelf frame
9	Over Shelf	1.2mm 304 grade° N 4 S.S	Weld & polished
10	Horizontal and cantilever frames	50x25x1.2mm 304 grade° N 4 S.H.S	Removable with 40mm fascia
11	Bench top	1.2mm 304 grade° N 4 S.S	S/Steel benchtop adhered to bench frames and crossbracing with 3m brand VHB double sided tape
12	Plywood	18mm	fully screwed and sealed to all frames



1 Typical s/s infill bench detail
1 : 25



2 Wet area with wash sink detail
1 : 25



4 Island bench with gantry detail
1 : 25



Gold Coast (Head Office)
88 Upton Street
Bundall QLD 4217
Brisbane
1/1 Carol Avenue
Springwood QLD 4127
Molendinar
(Warehouse/Accounts)
2/8 Reichert Drive
Molendinar QLD 4214
Phone: 1300 CKC 000
www.commercialkitchencompany.com.au

Project: Greenmount Surf Club, Café

Address: Marine Parade, Coolangatta QLD 4225



DISCLAIMER:

- All drawings are to be read in conjunction with associated engineers drawings where applicable. All equipment, applications and furniture items shown are close to accurate representations and exact dimensions and clearance requirements should be checked with supplier prior to installation.
- All dimensions are to be checked on site prior to any on site construction or off site fabrication. Use written dimensions only, do not scale from printed or electronic drawings. Electronic formatted drawings should be checked for accuracy against the equivalent hard copy issued by CommercialKitchen Company.
- No responsibility is accepted by CommercialKitchen Company for the misuse or alteration of this drawing in any format.
- The designs and concepts expressed on this page are owned by CommercialKitchen Company and will be assigned to the client on completion for the sole purpose of the intended project use only. Any other use or reproduction must be approved by CommercialKitchen Company.

S/S Works Details

Sheet No: A112

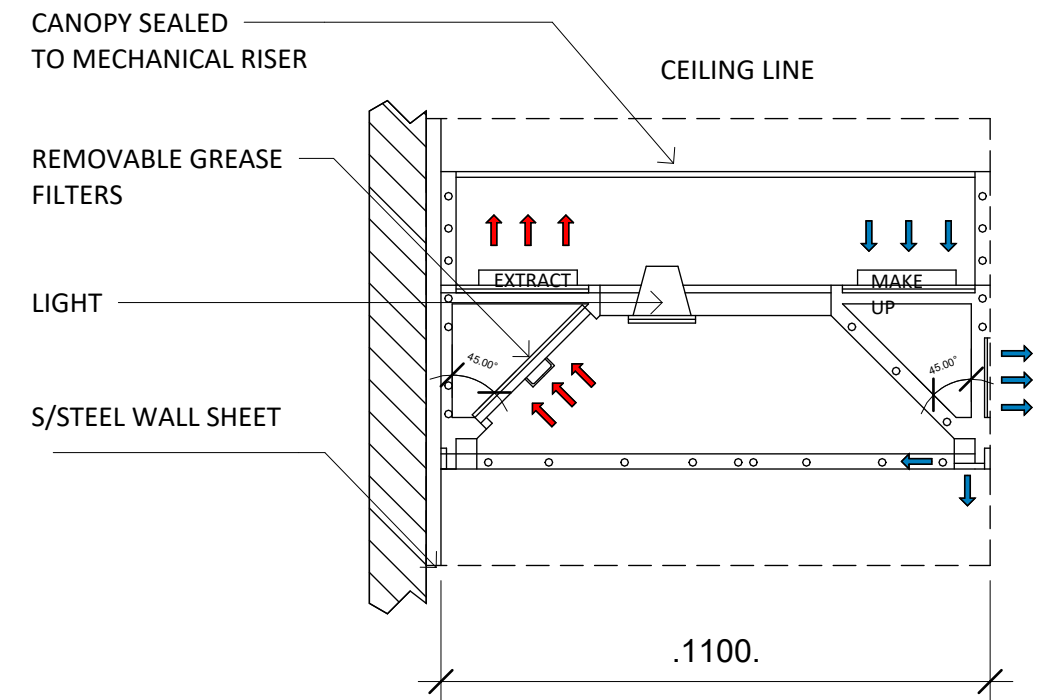
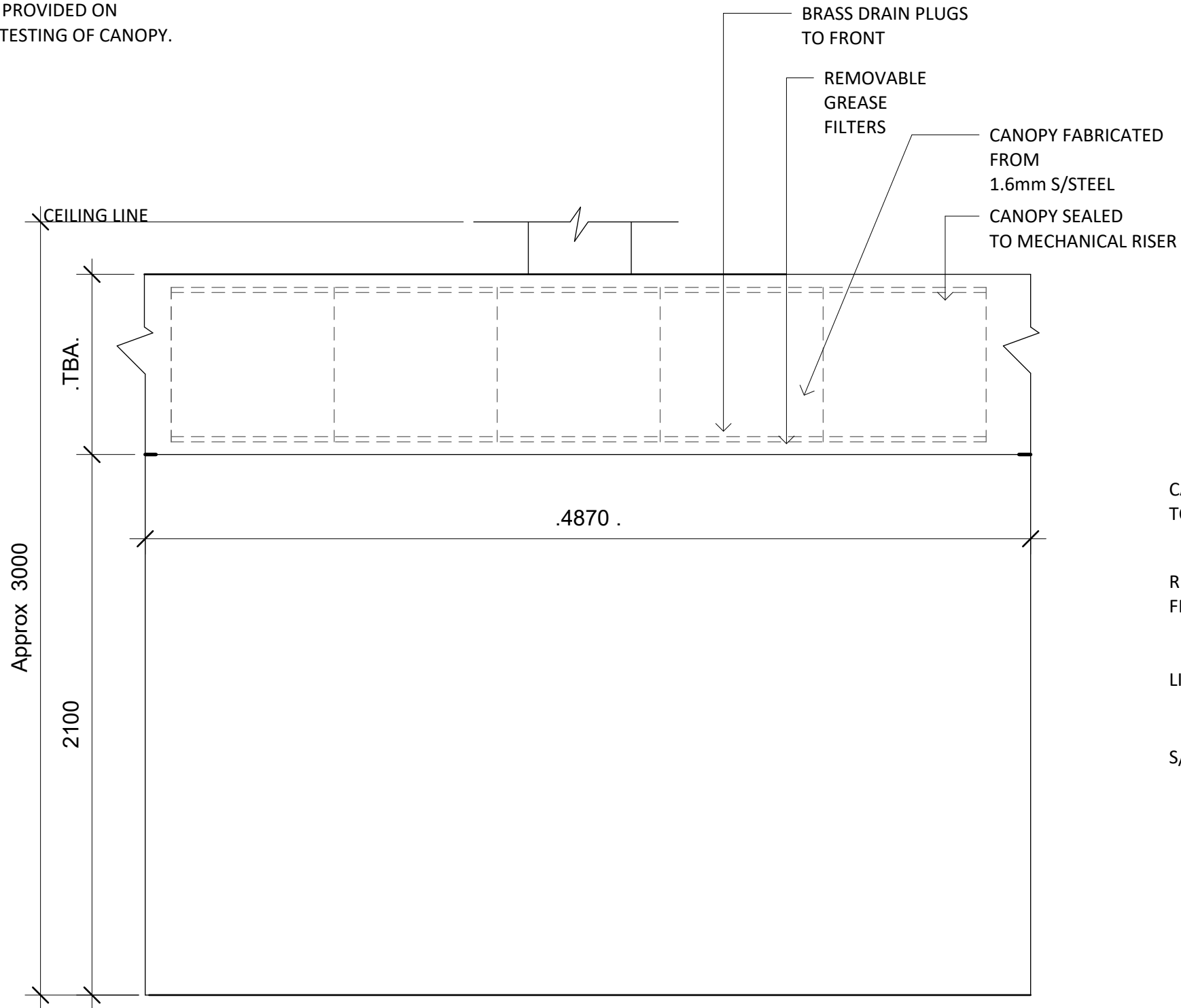
Date: 03-Aug-23 11:15:07 AM

REVISION	AMENDMENT	DATE
Rev. A		26-07-23
Rev. B		03-08-23

Scale: 1 : 25 @ A3

NOTE:
 EXHAUST CANOPY DUCT WORK AND QUANTITY MAY VARY FROM AS SHOWN AND IS TO BE CUSTOM MADE TO SUIT SITE CONDITIONS.
 THIS IS INDICATIVE ONLY

FINAL MECHANICAL VENTILATION CERTIFICATE TO BE PROVIDED ON COMPLETION AND TESTING OF CANOPY.



Gold Coast (Head Office)
 88 Upton Street
 Bundall QLD 4217
 Brisbane
 1/1 Carol Avenue
 Springwood QLD 4127
 Molendinar
 (Warehouse/Accounts)
 2/8 Reichert Drive
 Molendinar QLD 4214
 Phone: 1300 CKC 000
 www.commercialkitchencompany.com.au

Project: Greenmount Surf Club, Café

Address: Marine Parade, Coolangatta QLD 4225



DISCLAIMER:

- All drawings are to be read in conjunction with associated engineers drawings where applicable. All equipment, applications and furniture items shown are close to accurate representations and exact dimensions and clearance requirements should be checked with supplier prior to installation.
- All dimensions are to be checked on site prior to any on site construction or off site fabrication. Use written dimensions only, do not scale from printed or electronic drawings. Electronic formatted drawings should be checked for accuracy against the equivalent hard copy issued by CommercialKitchen Company.
- No responsibility is accepted by CommercialKitchen Company for the misuse or alteration of this drawing in any format.
- The designs and concepts expressed on this page are owned by CommercialKitchen Company and will be assigned to the client on completion for the sole purpose of the intended project use only. Any other use or reproduction must be approved by CommercialKitchen Company.


Exhaust Hood Detail (K02)


Sheet No: A113

Date: 03-Aug-23 11:15:08 AM

REVISION	AMENDMENT	DATE
Rev. A		26-07-23
Rev. B		03-08-23

Scale: 1 : 20 @ A3

Paint Finish (PT01): Ceiling White +Plus		
	Area	Ceiling (Kitchen, BOH), Exterior Walls
	Style / Finish	Flat - Mould & Bacteria Resistant Paint
	Brand / Model	Dulux / 615D0118

Flooring Finish (FL01): Vinyl		
	Area	Coving on walls and floor
	Finish	Grey Vinyl
	Coating Style	Commercial Grade - Non slippery Covering W/ Coving on walls AFFL 150H and edges

Metal (SSW01): Stainless Steel Wall Sheet		
	Area	Kitchen cook line Wall
	Range/Colour	-
	Profile	-
	Supplier	By Contractor

Tiles (TL01): White Gloss Wall Tile		
	Area	Kitchen (BOH)
	Range/Finish	Gloss
	Product Number	WGW200200
	Laid / Size	Stack bond / 200 x 200mm
	Grout	Ardex FG8 '200' White
	Brand	Tile Stone Paver

Timber (TM01): Natural Oak Timber		
	Area	Exterior Deck, Wall Features & roller shutter's window ledge
	Type	Tasmanian Oak
	Coating Style	Solid Timber Oiled Finish



Gold Coast (Head Office)
88 Upton Street
Bundall QLD 4217
Brisbane
1/1 Carol Avenue
Springwood QLD 4127
Molendinar
(Warehouse/Accounts)
2/8 Reichert Drive
Molendinar QLD 4214
Phone: 1300 CKC 000
www.commercialkitchencompany.com.au

Project: Greenmount Surf Club, Café

Address: Marine Parade, Coolangatta QLD 4225



DISCLAIMER:

- All drawings are to be read in conjunction with associated engineers drawings where applicable. All equipment, applications and furniture items shown are close to accurate representations and exact dimensions and clearance requirements should be checked with supplier prior to installation.
- All dimensions are to be checked on site prior to any on site construction or off site fabrication. Use written dimensions only, do not scale from printed or electronic drawings. Electronic formatted drawings should be checked for accuracy against the equivalent hard copy issued by CommercialKitchen Company.
- No responsibility is accepted by CommercialKitchen Company for the misuse or alteration of this drawing in any format.
- The designs and concepts expressed on this page are owned by CommercialKitchen Company and will be assigned to the client on completion for the sole purpose of the intended project use only. Any other use or reproduction must be approved by CommercialKitchen Company.

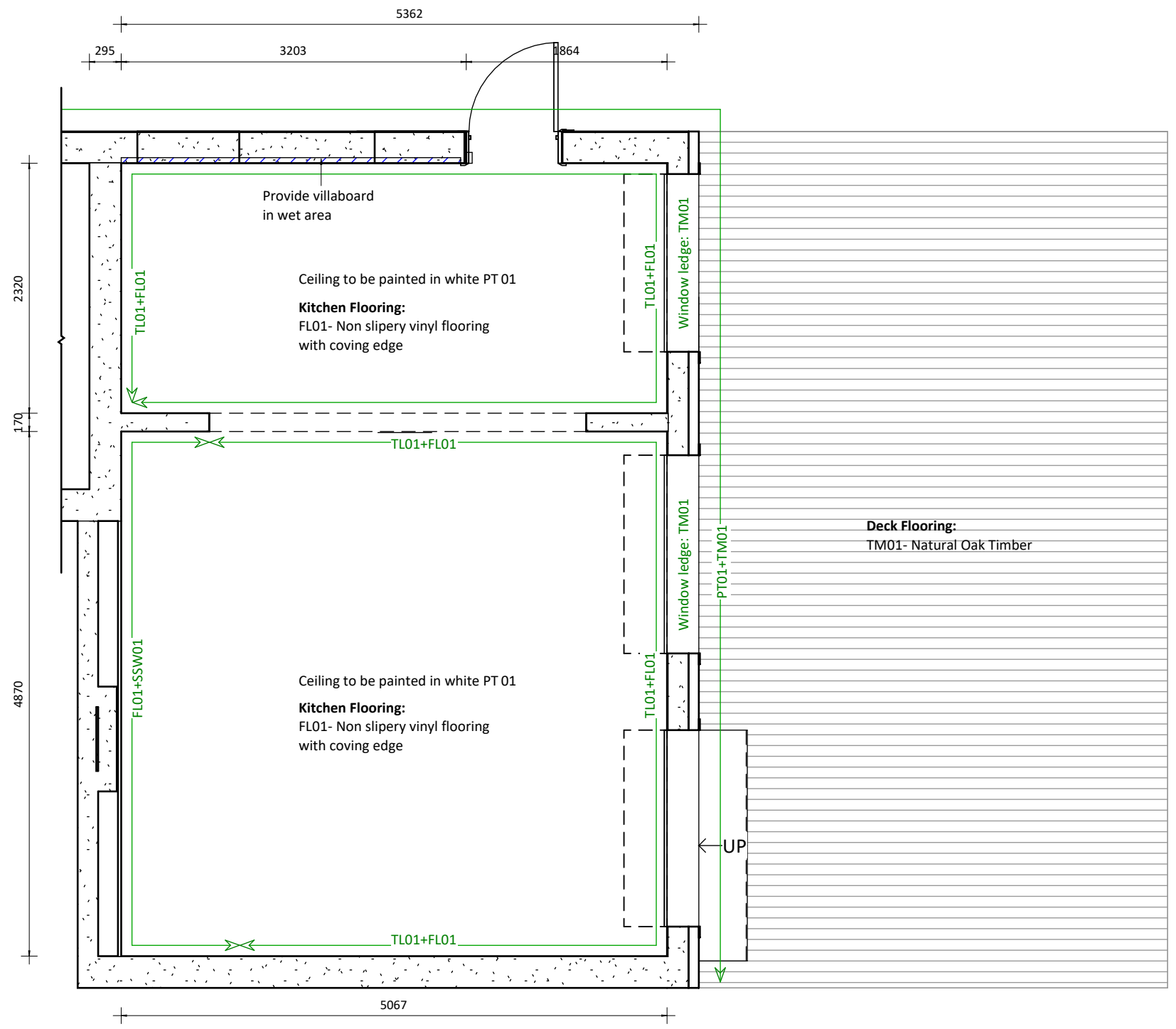
Finishes Schedules

Sheet No: A114

Date: 03-Aug-23 11:15:12 AM

REVISION	AMENDMENT	DATE
Rev. A		26-07-23
Rev. B		03-08-23

Scale: @ A3



Gold Coast (Head Office)
88 Upton Street
Bundall QLD 4217
Brisbane
1/1 Carol Avenue
Springwood QLD 4127
Molendinar
(Warehouse/Accounts)
2/8 Reichert Drive
Molendinar QLD 4214
Phone: 1300 CKC 000
www.commercialkitchencompany.com.au

Project: Greenmount Surf Club, Café

Address: Marine Parade, Coolangatta QLD 4225



DISCLAIMER:

- All drawings are to be read in conjunction with associated engineers drawings where applicable. All equipment, applications and furniture items shown are close to accurate representations and exact dimensions and clearance requirements should be checked with supplier prior to installation.
- All dimensions are to be checked on site prior to any on site construction or off site fabrication. Use written dimensions only, do not scale from printed or electronic drawings. Electronic formatted drawings should be checked for accuracy against the equivalent hard copy issued by Commercial Kitchen Company.
- No responsibility is accepted by Commercial Kitchen Company for the misuse or alteration of this drawing in any format.
- The designs and concepts expressed on this page are owned by Commercial Kitchen Company and will be assigned to the client on completion for the sole purpose of the intended project use only. Any other use or reproduction must be approved by Commercial Kitchen Company.

Finishes Layout

Sheet No: A115

Date: 03-Aug-23 11:15:12 AM

REVISION

AMENDMENT

DATE

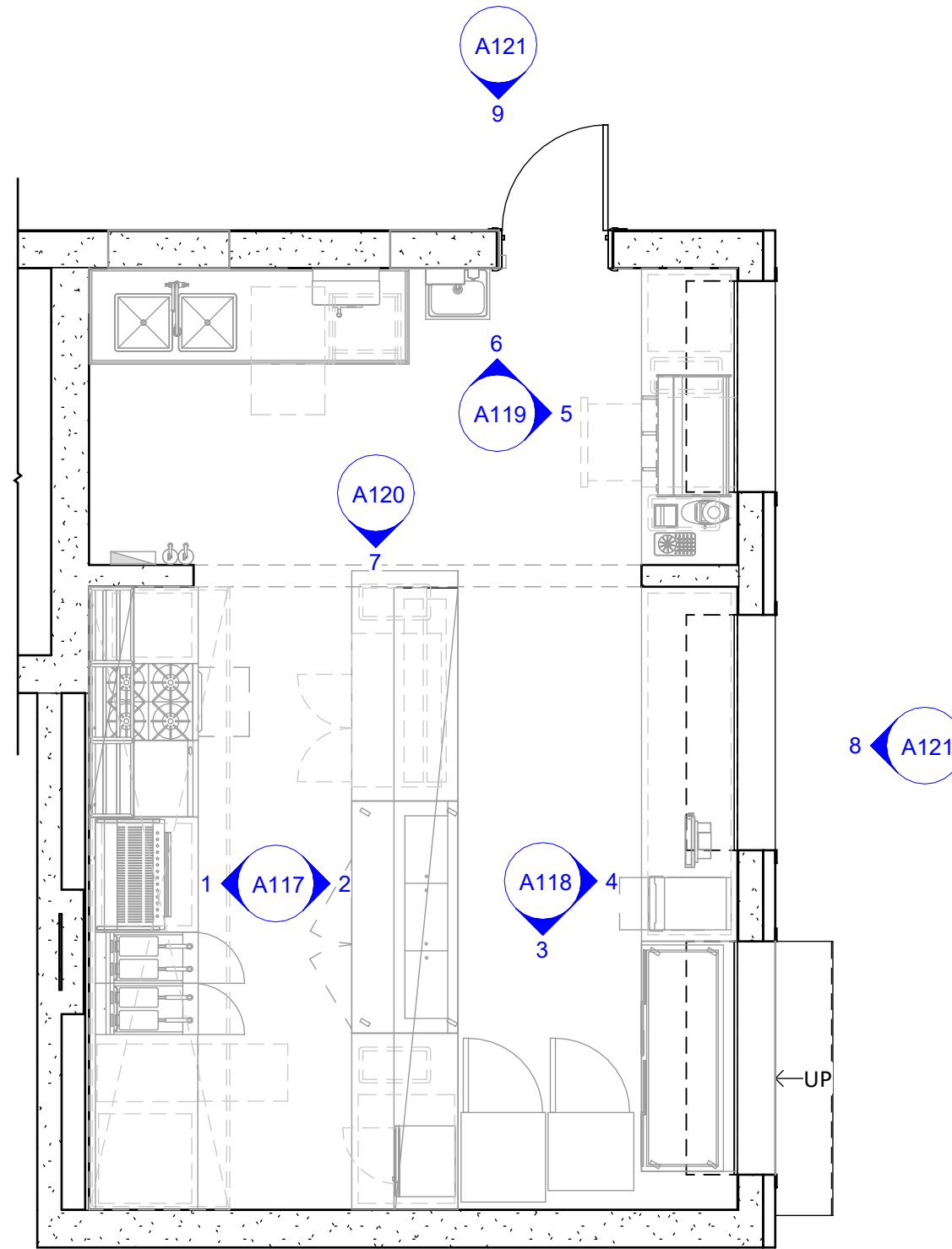
Rev. A

26-07-23

Rev. B

03-08-23

Scale: 1 : 50 @ A3



Gold Coast (Head Office)
 88 Upton Street
 Bundall QLD 4217
 Brisbane
 1/1 Carol Avenue
 Springwood QLD 4127
 Molendinar
 (Warehouse/Accounts)
 2/8 Reichert Drive
 Molendinar QLD 4214
 Phone: 1300 CKC 000
 www.commercialkitchencompany.com.au

Project: Greenmount Surf Club, Café

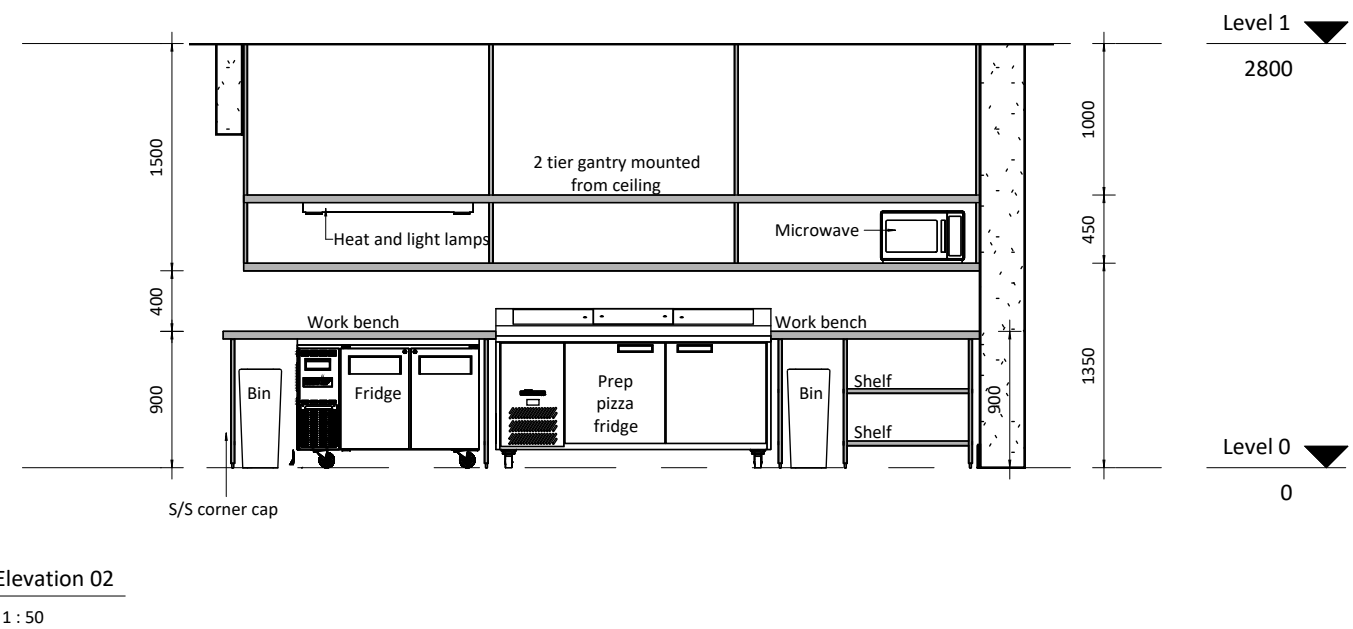
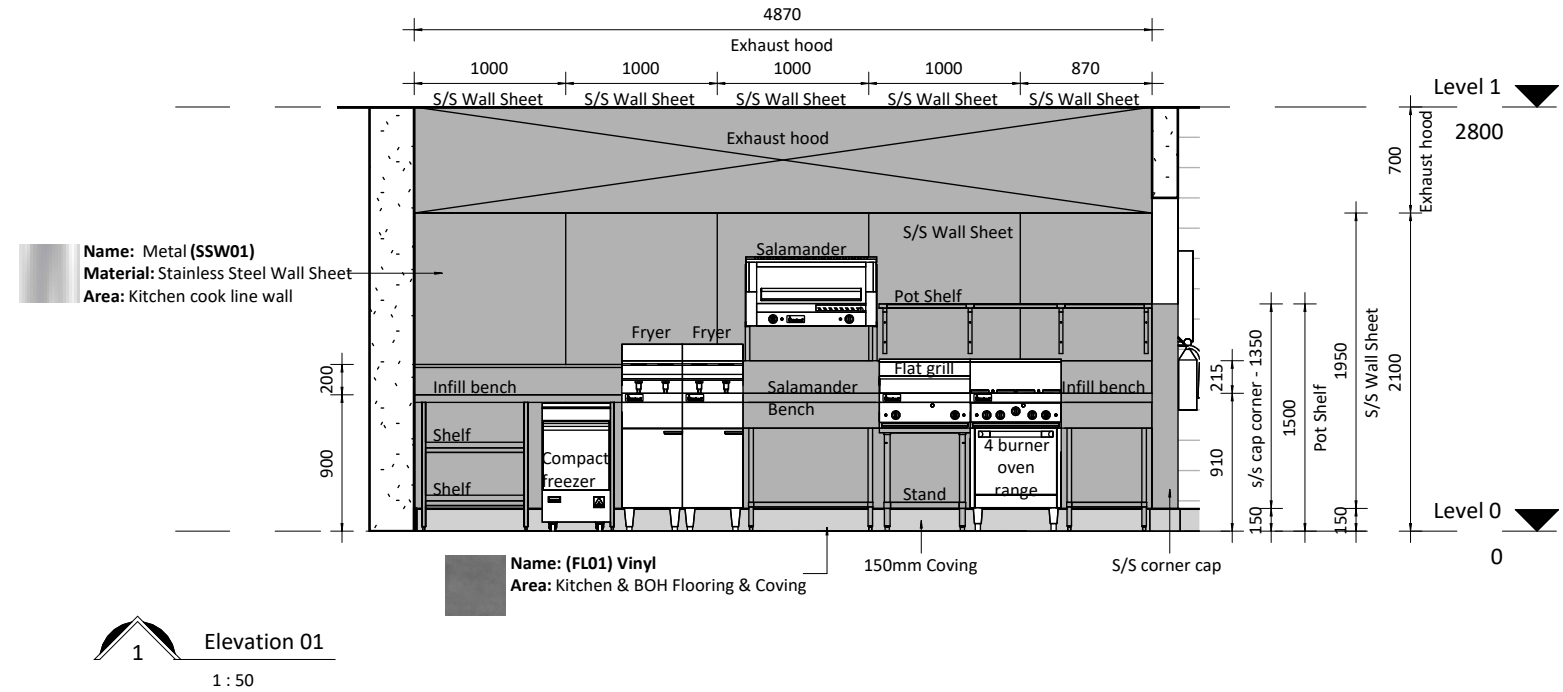
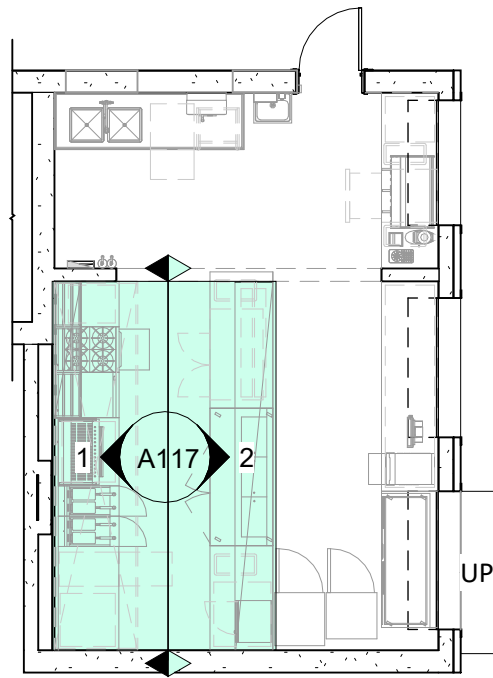
Address: Marine Parade, Coolangatta QLD 4225



DISCLAIMER:

- All drawings are to be read in conjunction with associated engineers drawings where applicable. All equipment, applications and furniture items shown are close to accurate representations and exact dimensions and clearance requirements should be checked with supplier prior to installation.
- All dimensions are to be checked on site prior to any on site construction or off site fabrication. Use written dimensions only, do not scale from printed or electronic drawings. Electronic formatted drawings should be checked for accuracy against the equivalent hard copy issued by CommercialKitchen Company.
- No responsibility is accepted by CommercialKitchen Company for the misuse or alteration of this drawing in any format.
- The designs and concepts expressed on this page are owned by CommercialKitchen Company and will be assigned to the client on completion for the sole purpose of the intended project use only. Any other use or reproduction must be approved by CommercialKitchen Company.

Section Cut Plan		Sheet No: A116	
Date: 03-Aug-23 11:15:13 AM	REVISION	AMENDMENT	DATE
	Rev. A		26-07-23
	Rev. B		03-08-23
Scale: 1 : 50	@ A3		



Gold Coast (Head Office)
 88 Upton Street
 Bundall QLD 4217

Brisbane
 1/1 Carol Avenue
 Springwood QLD 4127

Molendinar
 (Warehouse/Accounts)
 2/8 Reichert Drive
 Molendinar QLD 4214

Phone: 1300 CKC 000
www.commercialkitchencompany.com.au

Project: Greenmount Surf Club, Café

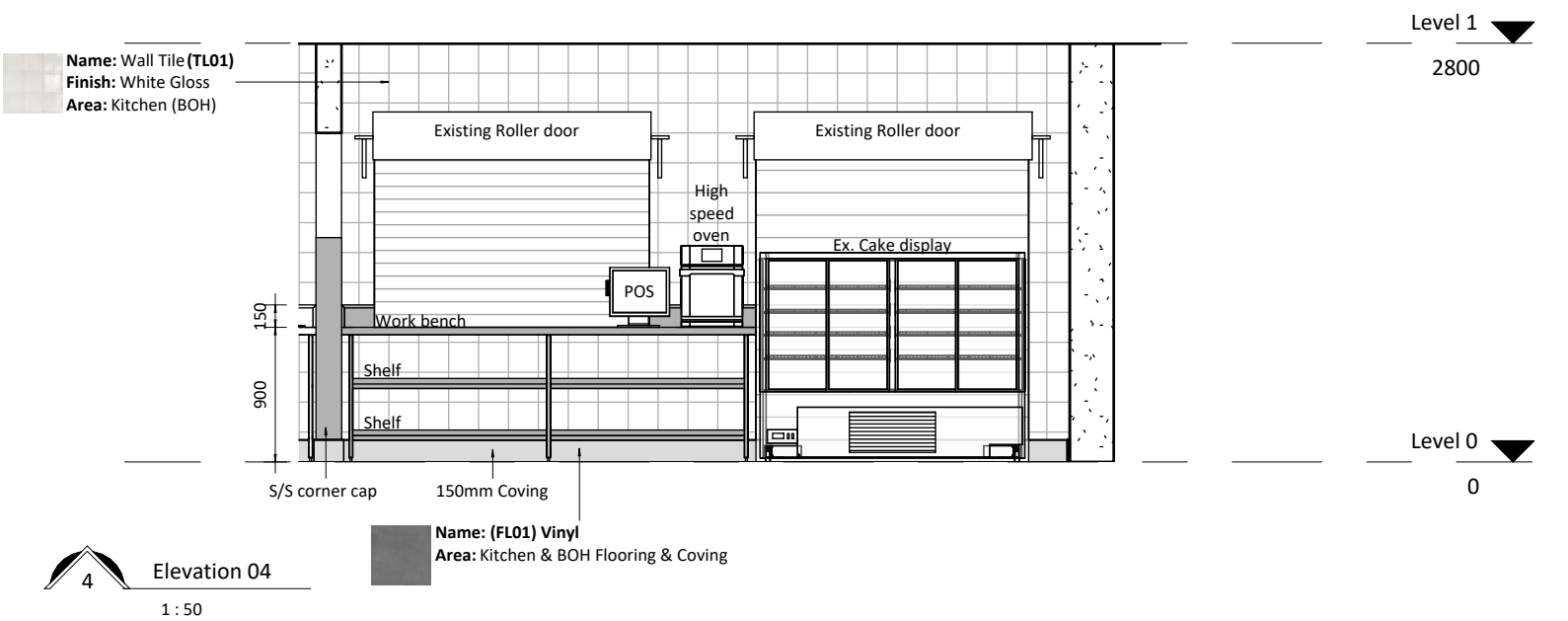
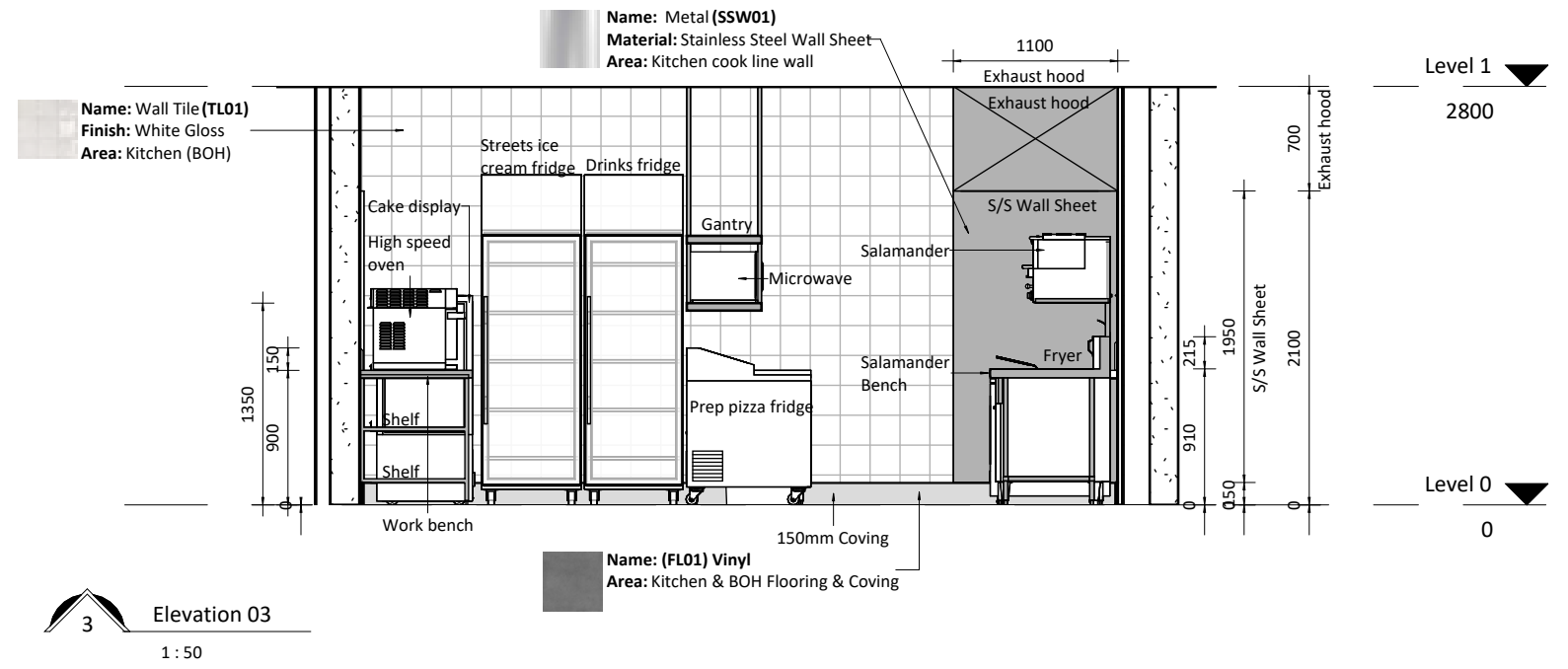
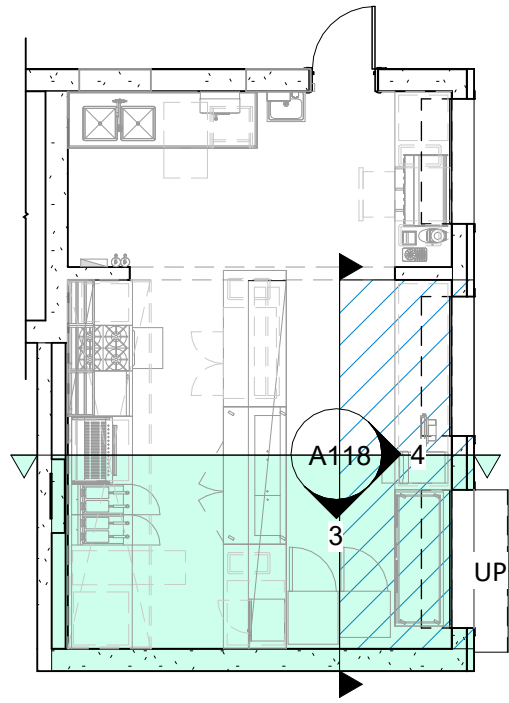
Address: Marine Parade, Coolangatta QLD 4225



DISCLAIMER:

- All drawings are to be read in conjunction with associated engineers drawings where applicable. All equipment, applications and furniture items shown are close to accurate representations and exact dimensions and clearance requirements should be checked with supplier prior to installation.
- All dimensions are to be checked on site prior to any on site construction or off site fabrication. Use written dimensions only, do not scale from printed or electronic drawings. Electronic formatted drawings should be checked for accuracy against the equivalent hard copy issued by CommercialKitchen Company.
- No responsibility is accepted by CommercialKitchen Company for the misuse or alteration of this drawing in any format.
- The designs and concepts expressed on this page are owned by CommercialKitchen Company and will be assigned to the client on completion for the sole purpose of the intended project use only. Any other use or reproduction must be approved by CommercialKitchen Company.

Elevation 1,2		Sheet No: A117	
Date: 03-Aug-23 11:15:15 AM	REVISION	AMENDMENT	DATE
	Rev. A		26-07-23
	Rev. B		03-08-23
Scale: As indicated @ A3			



Gold Coast (Head Office)
 88 Upton Street
 Bundall QLD 4217
 Brisbane
 1/1 Carol Avenue
 Springwood QLD 4127
 Molendinar
 (Warehouse/Accounts)
 2/8 Reichert Drive
 Molendinar QLD 4214
 Phone: 1300 CKC 000
 www.commercialkitchencompany.com.au

Project: Greenmount Surf Club, Café

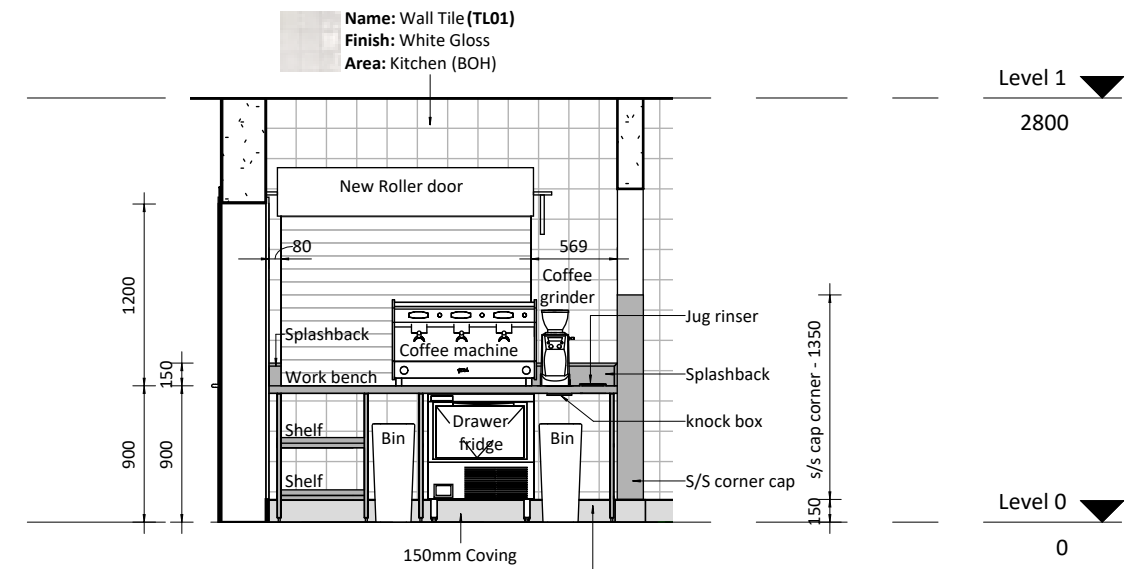
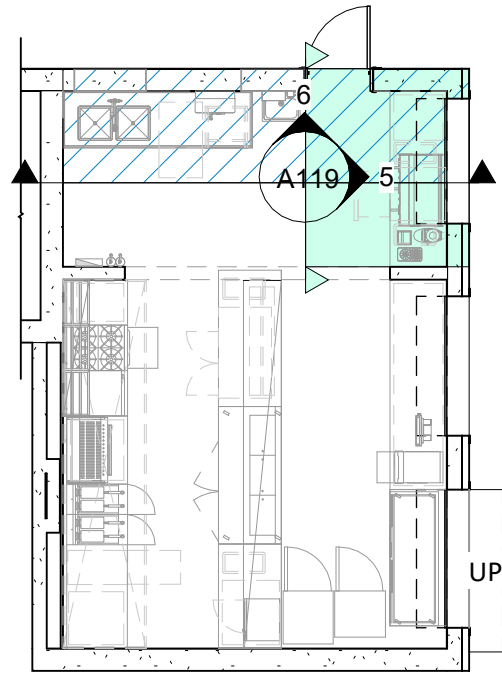
Address: Marine Parade, Coolangatta QLD 4225



DISCLAIMER:

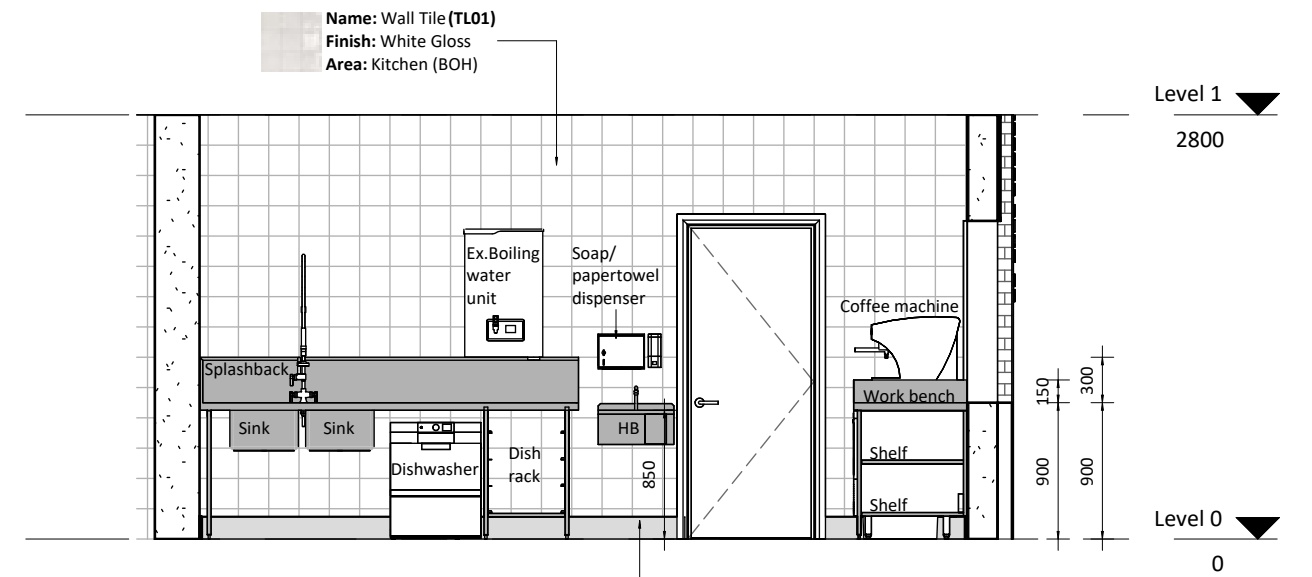
- All drawings are to be read in conjunction with associated engineers drawings where applicable. All equipment, applications and furniture items shown are close to accurate representations and exact dimensions and clearance requirements should be checked with supplier prior to installation.
- All dimensions are to be checked on site prior to any on site construction or off site fabrication. Use written dimensions only, do not scale from printed or electronic drawings. Electronic formatted drawings should be checked for accuracy against the equivalent hard copy issued by CommercialKitchen Company.
- No responsibility is accepted by CommercialKitchen Company for the misuse or alteration of this drawing in any format.
- The designs and concepts expressed on this page are owned by CommercialKitchen Company and will be assigned to the client on completion for the sole purpose of the intended project use only. Any other use or reproduction must be approved by CommercialKitchen Company.

Elevation 3,4		Sheet No: A118	
Date: 03-Aug-23 11:15:17 AM	REVISION	AMENDMENT	DATE
	Rev. A		26-07-23
	Rev. B		03-08-23
Scale: As indicated @ A3			



5 Elevation 05
1 : 50

Name: (FL01) Vinyl
Area: Kitchen & BOH Flooring & Covings



6 Elevation 06
1 : 50

Name: (FL01) Vinyl
Area: Kitchen & BOH Flooring & Covings



Gold Coast (Head Office)
 88 Upton Street
 Bundall QLD 4217
 Brisbane
 1/1 Carol Avenue
 Springwood QLD 4127
 Molendinar
 (Warehouse/Accounts)
 2/8 Reichart Drive
 Molendinar QLD 4214
 Phone: 1300 CKC 000
 www.commercialkitchencompany.com.au

Project: Greenmount Surf Club, Café

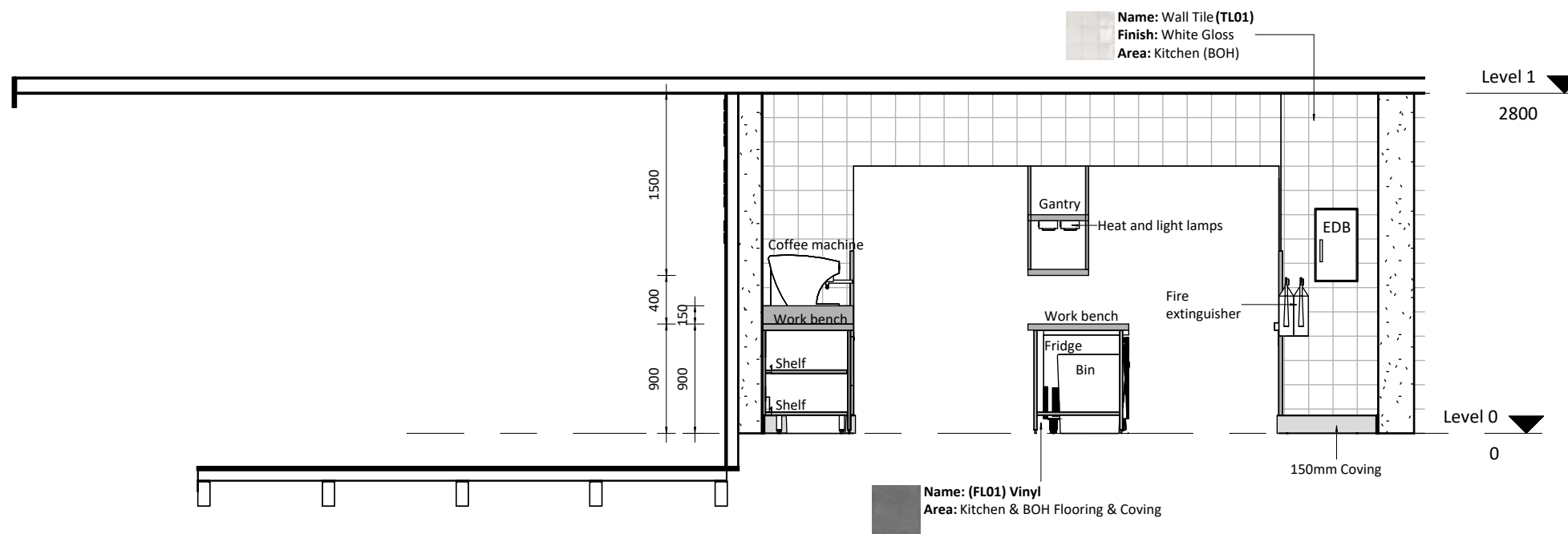
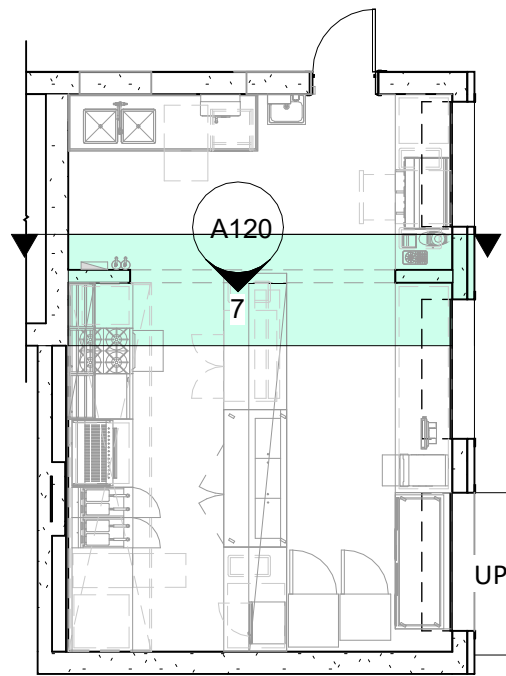
Address: Marine Parade, Coolangatta QLD 4225



DISCLAIMER:

- All drawings are to be read in conjunction with associated engineers drawings where applicable. All equipment, applications and furniture items shown are close to accurate representations and exact dimensions and clearance requirements should be checked with supplier prior to installation.
- All dimensions are to be checked on site prior to any on site construction or off site fabrication. Use written dimensions only, do not scale from printed or electronic drawings. Electronic formatted drawings should be checked for accuracy against the equivalent hard copy issued by CommercialKitchen Company.
- No responsibility is accepted by CommercialKitchen Company for the misuse or alteration of this drawing in any format.
- The designs and concepts expressed on this page are owned by CommercialKitchen Company and will be assigned to the client on completion for the sole purpose of the intended project use only. Any other use or reproduction must be approved by CommercialKitchen Company.

Elevation 5,6		Sheet No: A119	
Date: 03-Aug-23 11:15:18 AM	REVISION	AMENDMENT	DATE
	Rev. A		26-07-23
	Rev. B		03-08-23
Scale: As indicated	@ A3		



Elevation 07
1 : 50



Gold Coast (Head Office)
 88 Upton Street
 Bundall QLD 4217
Brisbane
 1/1 Carol Avenue
 Springwood QLD 4127
Molendinar
 (Warehouse/Accounts)
 2/8 Reichert Drive
 Molendinar QLD 4214
Phone: 1300 CKC 000
 www.commercialkitchencompany.com.au

Project: Greenmount Surf Club, Café

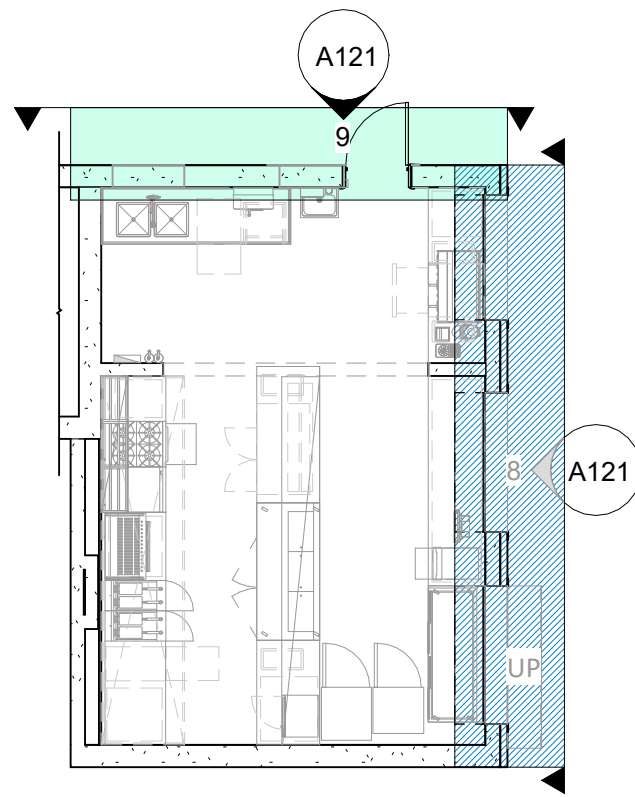
Address: Marine Parade, Coolangatta QLD 4225



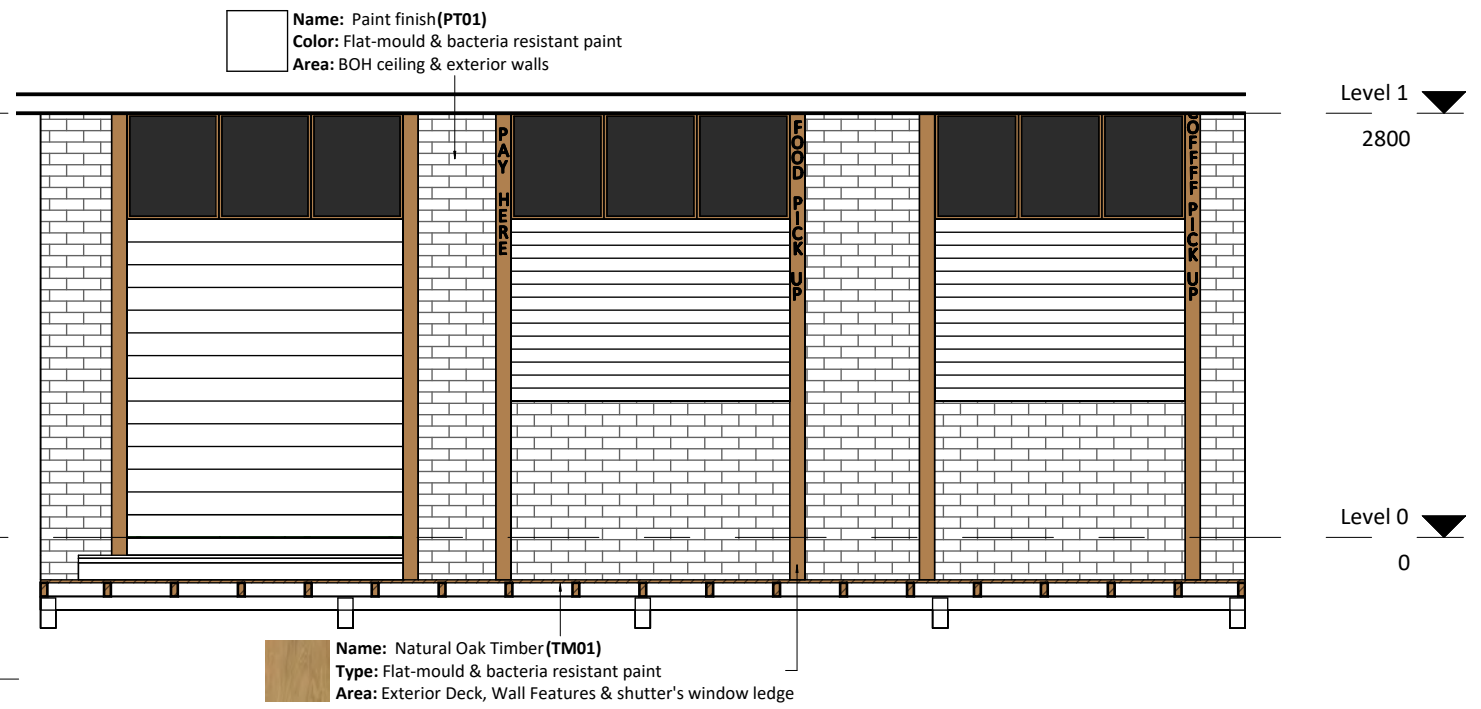
DISCLAIMER:

- All drawings are to be read in conjunction with associated engineers drawings where applicable. All equipment, applications and furniture items shown are close to accurate representations and exact dimensions and clearance requirements should be checked with supplier prior to installation.
- All dimensions are to be checked on site prior to any on site construction or off site fabrication. Use written dimensions only, do not scale from printed or electronic drawings. Electronic formatted drawings should be checked for accuracy against the equivalent hard copy issued by Commercial Kitchen Company.
- No responsibility is accepted by Commercial Kitchen Company for the misuse or alteration of this drawing in any format.
- The designs and concepts expressed on this page are owned by Commercial Kitchen Company and will be assigned to the client on completion for the sole purpose of the intended project use only. Any other use or reproduction must be approved by Commercial Kitchen Company.

Elevation 7		Sheet No: A120	
Date: 03-Aug-23 11:15:19 AM	REVISION	AMENDMENT	DATE
	Rev. A		26-07-23
	Rev. B		03-08-23
Scale: As indicated @ A3			

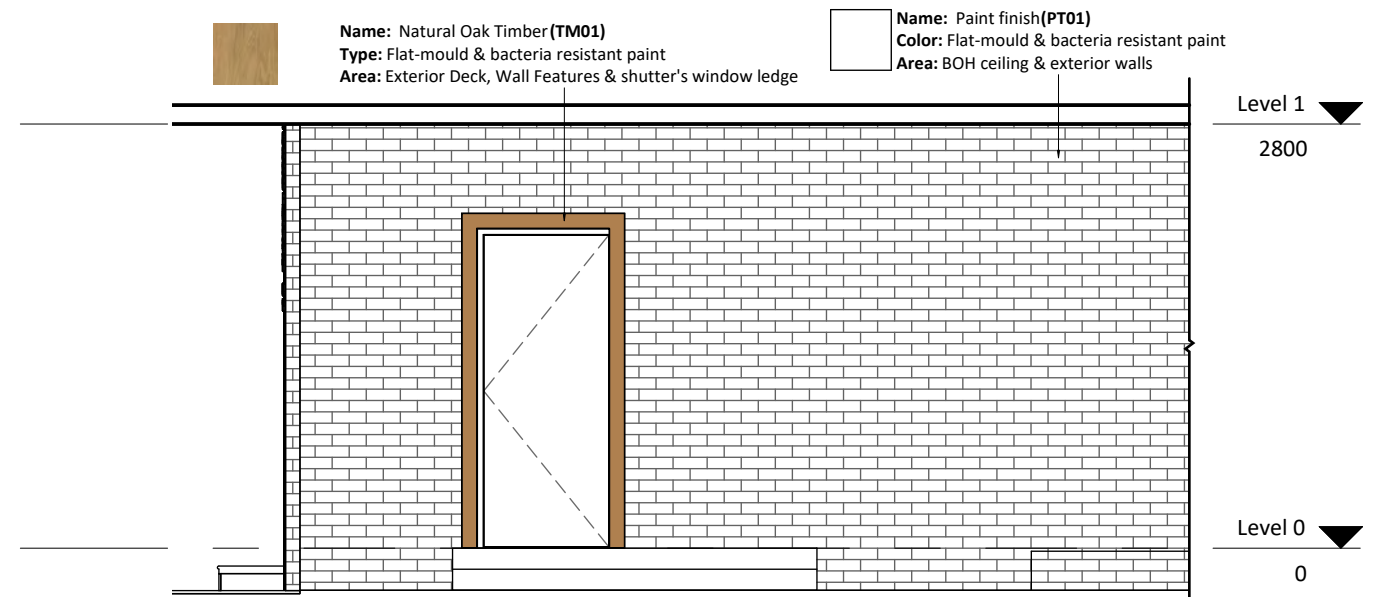


8 Elevation 08
1:50



3D 3D view

9 Elevation 09
1:50



Gold Coast (Head Office)
88 Upton Street
Bundall QLD 4217
Brisbane
1/1 Carol Avenue
Springwood QLD 4127
Molendinar
(Warehouse/Accounts)
2/8 Reichart Drive
Molendinar QLD 4214
Phone: 1300 CKC 000
www.commercialkitchencompany.com.au

Project: Greenmount Surf Club, Café

Address: Marine Parade, Coolangatta QLD 4225



DISCLAIMER:

- All drawings are to be read in conjunction with associated engineers drawings where applicable. All equipment, applications and furniture items shown are close to accurate representations and exact dimensions and clearance requirements should be checked with supplier prior to installation.
- All dimensions are to be checked on site prior to any on site construction or off site fabrication. Use written dimensions only, do not scale from printed or electronic drawings. Electronic formatted drawings should be checked for accuracy against the equivalent hard copy issued by CommercialKitchen Company
- No responsibility is accepted by CommercialKitchen Company for the misuse or alteration of this drawing in any format.
- The designs and concepts expressed on this page are owned by CommercialKitchen Company and will be assigned to the client on completion for the sole purpose of the intended project use only. Any other use or reproduction must be approved by CommercialKitchen Company.

Elevation 8,9		Sheet No: A121	
Date: 03-Aug-23 11:15:23 AM	REVISION	AMENDMENT	DATE
	Rev. A		26-07-23
	Rev. B		03-08-23
Scale: As indicated	@ A3		